

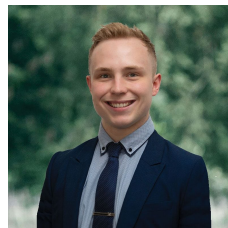


**32 Eton Street Wendouree VIC**

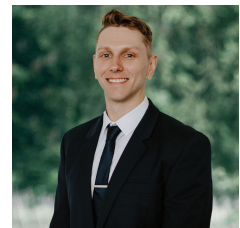
3 1 2

Nestled in the heart of Wendouree, this delightful residence beckons with its captivating charm set on an expansive 618m<sup>2</sup> (approx) plot of land. Within strolling distance of the renowned Stockland amenities and public transport and within close proximity to the picturesque Lake Wendouree, esteemed primary and secondary schools and healthcare facilities. This prime location transforms every aspect of daily life into a seamless experience. At first glance, the residence showcases its dark brick facade, complemented by verdant front lawns and gardens enclosed by a charming picket fence. A double carport awaits, providing abundant off-street parking for your convenience. Inside, three well-appointed bedrooms, each featuring built-in robes. The family bathroom features a walk-in shower and vanity, while a separate toilet enhances convenience. The kitchen and dini ...

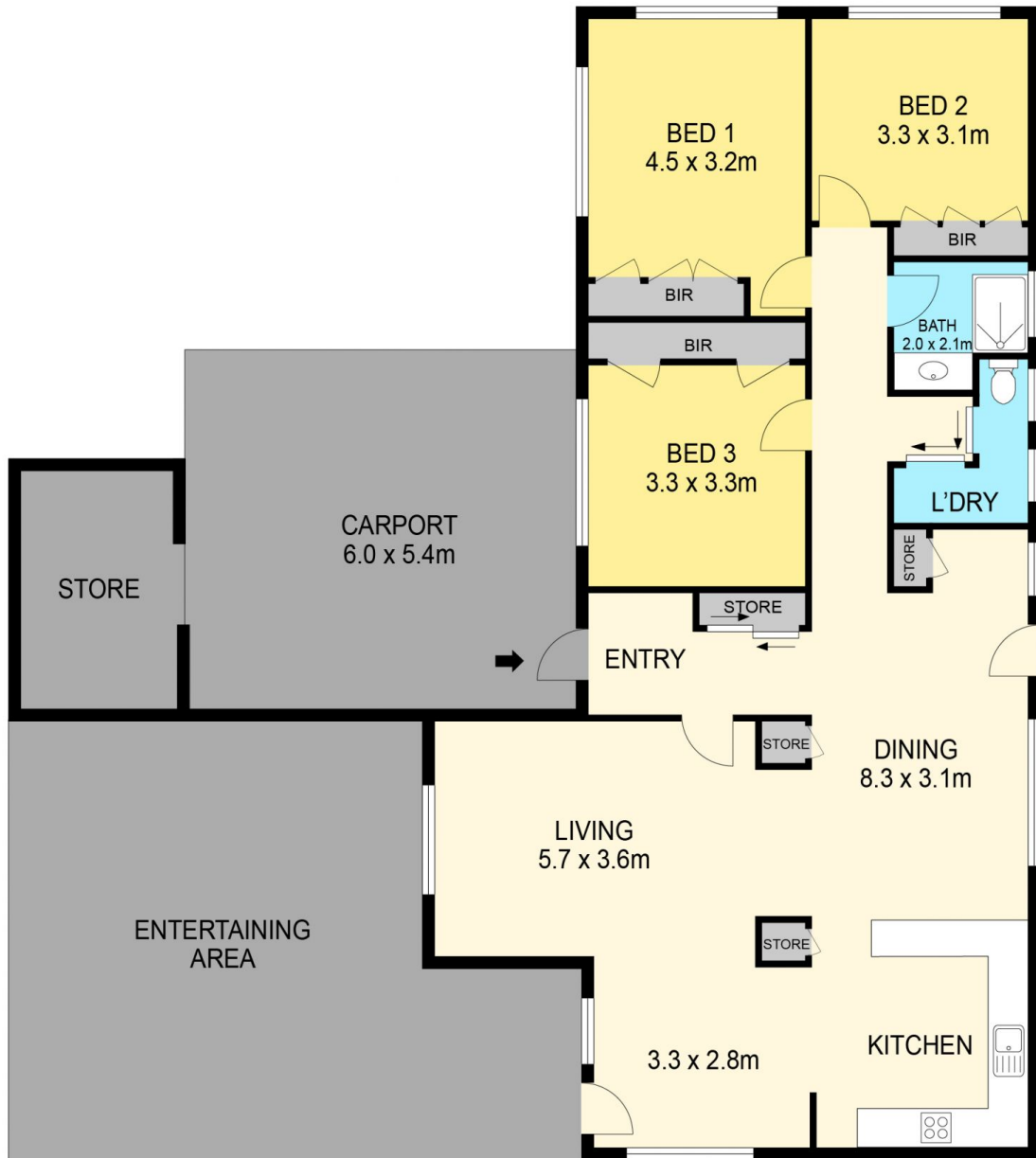
**Price** : \$ 385,000  
**Land Size** : 618 sqm  
**View** : <https://www.ballaratrealestate.com.au/sale/vic/ballarat-western-district/wendouree/residential/house/7862990>



**Lachlan Sylvia**  
 03 53312233  
 0458 068 234



**Chris Just**  
 5331 2233  
 0438 235 293



**DISCLAIMER**

PLANS SHOWN ARE FOR MARKETING PURPOSES ONLY. ALL DIMENSIONS ARE APPROXIMATE AND NOT TO SCALE. THEY ARE SUBJECT TO ERRORS AND INACCURACIES AND NO LIABILITY WILL BE ACCEPTED. INTERESTED PARTIES SHOULD MAKE THEIR OWN INQUIRES.

**Ballarat**  
Real Estate

