

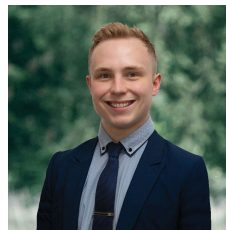


10 Nelmore Court Ballarat East VIC

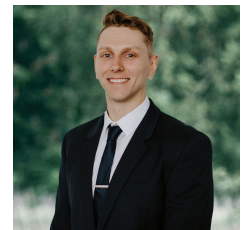
4 2 3

Nestled within the serene enclave of Ballarat East, this beautiful residence sits proudly on an expansive 721m2 (approx) parcel of land. Positioned just a short drive from the vibrant heart of Ballarat CBD and close to schools, daycare facilities, supermarkets, charming cafes and a plethora of stores. It's a fantastic choice for a family seeking a residence that effortlessly combines convenience with tranquility. From the first glance, the home captivates with its contemporary brick facade, adorned with rendered feature archways and accents. Lush lawns and manicured hedges guide you to the front door, where a double lock-up garage and workshop, complete with a roller door, provide a tantalizing glimpse of the treasures within. Upon entry, you're greeted by modern elements such as a taller doorway leading to the front-appointed lounge room, an ideal space for ...

Price : \$ 750,000
Land Size : 721 sqm
View : <https://www.ballaratrealestate.com.au/sale/view/ballarat-western-district/ballarat-east/residential/house/7862989>



Lachlan Sylvia
 03 53312233
 0458 068 234



Chris Just
 5331 2233
 0438 235 293



DISCLAIMER

PLANS SHOWN ARE FOR MARKETING PURPOSES ONLY, ALL DIMENSIONS ARE APPROXIMATE AND NOT TO SCALE. THEY ARE SUBJECT TO ERRORS AND INACCURACIES AND NO LIABILITY WILL BE ACCEPTED. INTERESTED PARTIES SHOULD MAKE THEIR OWN INQUIRIES.

Ballarat
Real Estate

