

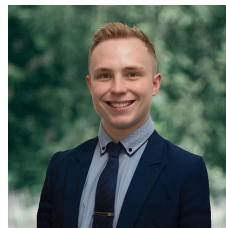


58 Sydney Way Alfredton VIC

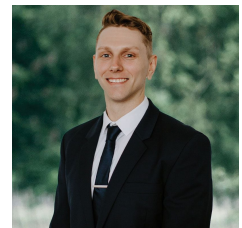
4 2 2

Nestled in the vibrant heart of Alfredton, this inviting family abode sprawls across a comfortable 448m² (approx) of prime land. Embrace the epitome of convenience with close proximity to recreational parks, Alfredton & Lucas Primary Schools, the prestigious Ballarat High School Catchment Zone, Daycare, Coltman Plaza featuring Woolworths, charming cafes and Australia post just to name a few - a dynamic setting ensuring an idyllic haven for a flourishing family. The residence welcomes you with a contemporary brick veneer façade adorned with rendered accents, a low-maintenance front garden and a double lock-up garage providing seamless internal access, a mere glimpse of what lies within. Discover a total of four bedrooms within, with the front appointed master suite featuring a walk-in robe and a private ensuite. The remaining three bedrooms, adorned with b ...

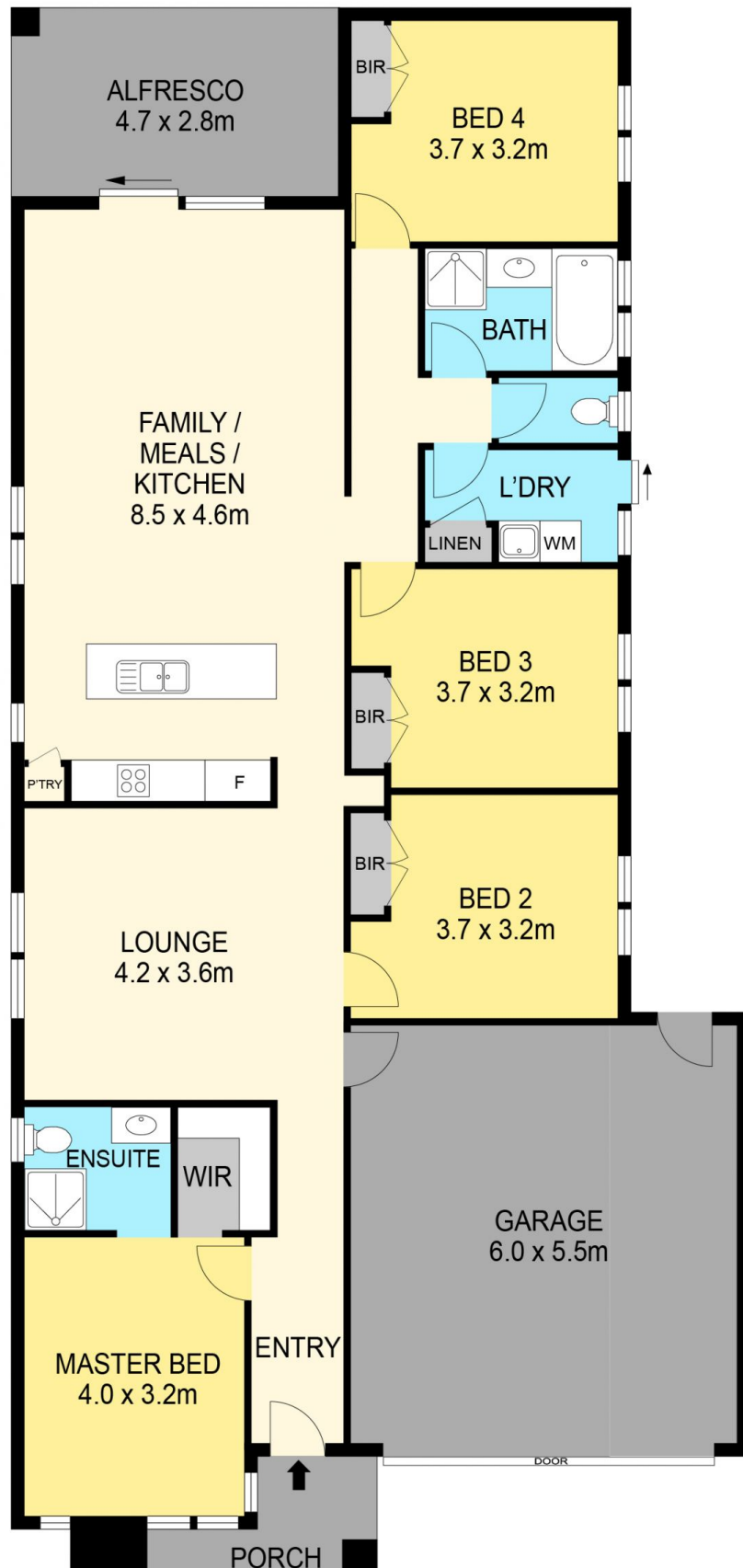
Price : \$530,000 - \$560,000
Land Size : 448 sqm
View : <https://www.ballaratrealestate.com.au/sale/vic/ballarat-western-district/alfredton/residential/house/7857561>



Lachlan Sylvia
03 53312233
0458 068 234



Chris Just
5331 2233
0438 235 293



DISCLAIMER

PLANS SHOWN ARE FOR MARKETING PURPOSES ONLY, ALL DIMENSIONS ARE APPROXIMATE AND NOT TO SCALE. THEY ARE SUBJECT TO ERRORS AND INACCURACIES AND NO LIABILITY WILL BE ACCEPTED. INTERESTED PARTIES SHOULD MAKE THEIR OWN INQUIRES.

Ballarat
Real Estate

