



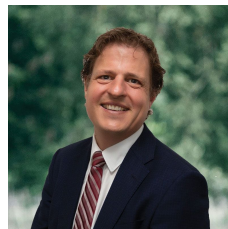
65 Wattle Avenue Wendouree VIC

3 1 4

Situated close to Stockland shopping centre, schools and sporting facilities is this well presented three bedroom home on a generous sized allotment. Stepping inside you will discover good sized living area, separate kitchen with loads of cupboard and bench space and meals area. Outside is a wonderful backyard ideal for a young family as well as car accommodation/shedding. A great opportunity to secure an entry level home or investment property to add to your portfolio. A must to inspect.

Price : \$ 325,000

View : <https://www.ballaratrealestate.com.au/sale/vic/ballarat-western-district/wendouree/residential/house/7843372>

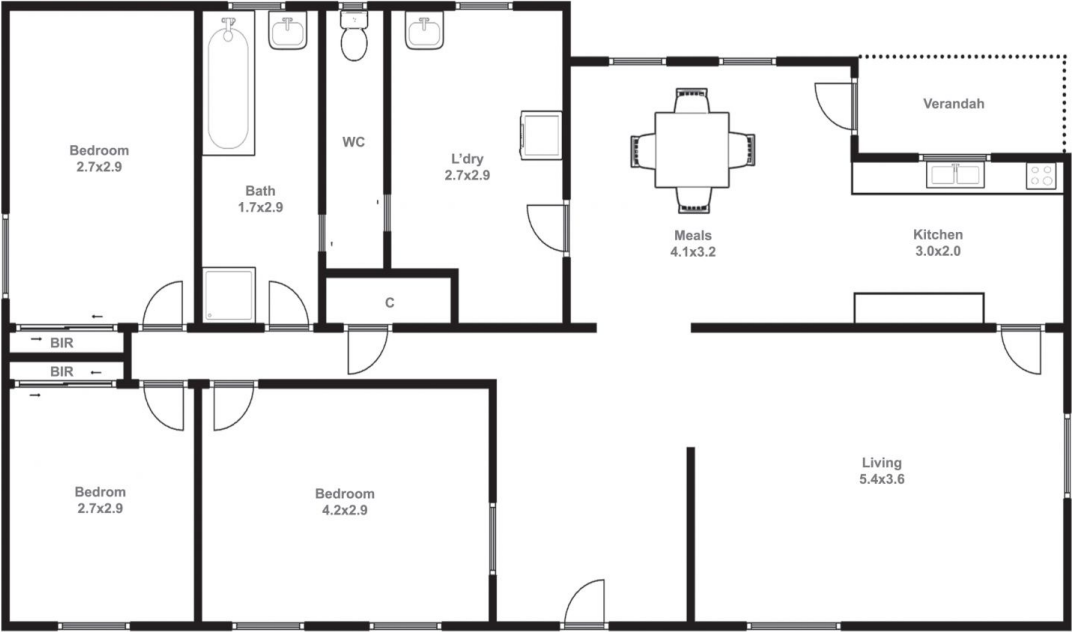


Allister Morrison
5331 2233
0438 508Â 855



Brendan Elliott
03 5331 2233
0459 976 132

65 Wattle Avenue **Wendouree**



Allister Morrison 0438 508 855

This plan is for illustrative purposes only, floor plan proportions and scale are approximate. Plan prepared by PLP Ballarat © 2023 for Ballarat Real Estate.