



## 420 Clayton Street Canadian VIC

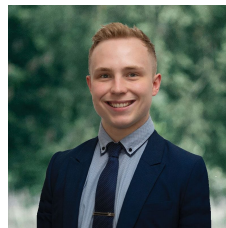
4 1 1

Nestled along a picturesque tree-lined street, discover an enchanting residence resting on an expansive 3297m<sup>2</sup> (approx) parcel of land. Just a short drive from the vibrant heart of Ballarat CBD and in close proximity to schools, Ballarat Wildlife Park, and the iconic Sovereign Hill, this property presents an enticing opportunity, strategically poised for future development (STCA).

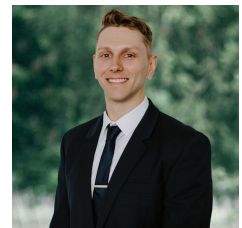
Step inside to be greeted by the charm of this home, where the ambiance is enhanced by features such as beautiful timber flooring and ornate cornices, creating an inviting and warm atmosphere. The residence boasts four bedrooms, three of which are adorned with built-in robes, sharing the convenience of a family bathroom.

The kitchen and dining area are thoughtfully designed, offering separation from the expansive living space, providing the perfect balance of functionality and comfort ...

**Price** : \$790,000 - \$830,000  
**Land Size** : 3297 sqm  
**View** : <https://www.ballaratrealestate.com.au/sale/vic/ballarat-western-district/canadian/residential/house/7835248>



**Lachlan Sylvia**  
03 53312233  
0458 068 234



**Chris Just**  
5331 2233  
0438 235 293



#### DISCLAIMER

PLANS SHOWN ARE FOR MARKETING PURPOSES ONLY. ALL DIMENSIONS ARE APPROXIMATE AND NOT TO SCALE. THEY ARE SUBJECT TO ERRORS AND INACCURACIES AND NO LIABILITY WILL BE ACCEPTED. INTERESTED PARTIES SHOULD MAKE THEIR OWN INQUIRIES.

Ballarat  
Real Estate

