

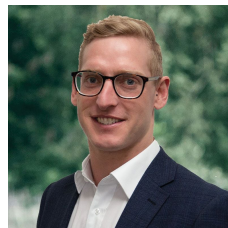


## 57 Briardale Avenue Enfield VIC

4 2 2

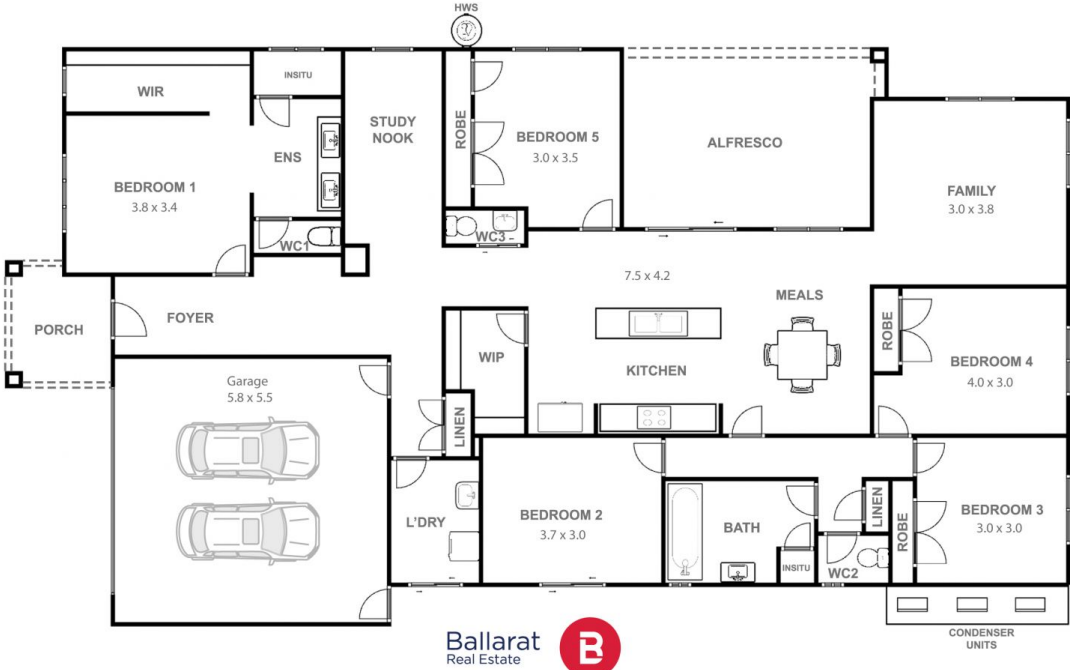
Discover modern comfort in a country setting at 57 Briardale Avenue, Enfield. This 4-bed, 2-bath residence on a spacious 5,841m<sup>2</sup> block features a woodfire lounge, three cooling systems, and ceiling fans throughout. The master bedroom, located at the front of the house includes an ensuite with a double vanity and a walk in robe while remaining three bedrooms include built in robes. The kitchen is the centre piece of the home features 900mm gas cooking, double sink and a large fridge alcove. With a double garage, additional shedding, and a dam at the rear, it offers tranquillity and convenience with endless opportunities with the 5,841m<sup>2</sup> block. Easy access to Ballarat and proximity to the local community centre with playground and skatepark make this property a perfect blend of comfort and lifestyle. For more information contract the exclusive listing agent M ...

**Price** : \$695,000 - \$765,000  
**Land Size** : 5841 sqm  
**View** : <https://www.ballaratrealestate.com.au/sale/vic/ballarat-western-district/enfield/residential/house/7827356>



**Mitchell Couch**  
**03 53312233**  
**0423543023**

57 Briardale Avenue **Enfield**



This plan is for illustrative purposes only, floor plan proportions and scale are approximate. Plan prepared by PLP Ballarat © 2023 for Ballarat Real Estate.