



32 Wattle Dale Avenue Enfield VIC

4 1 6

Nestled in the heart of Enfield, please experience the perfect blend of comfort, convenience, and natural beauty. This delightful family home offers a range of modern features, ensuring a lifestyle of ease and tranquility. As you step inside, the main living area welcomes you with a cozy ambiance, equipped with both a split system for climate control and a wood fireplace, providing warmth and charm during chilly evenings. The residence boasts three generously sized bedrooms, all complemented by built-in robes, offering practical storage solutions for the entire family. The main bedroom, featuring a glass sliding door, opens up to delightful views, providing a private retreat within your home. Wake up to the beauty of the surroundings and unwind in the comfort of your own space. The modern bathroom, complete with a separate bath and shower, adds a touch of soph ...

Price : \$ 640,000

Land Size : 4667 sqm

View : <https://www.ballaratrealestate.com.au/sale/vic/ballarat-western-district/enfield/residential/house/7817443>

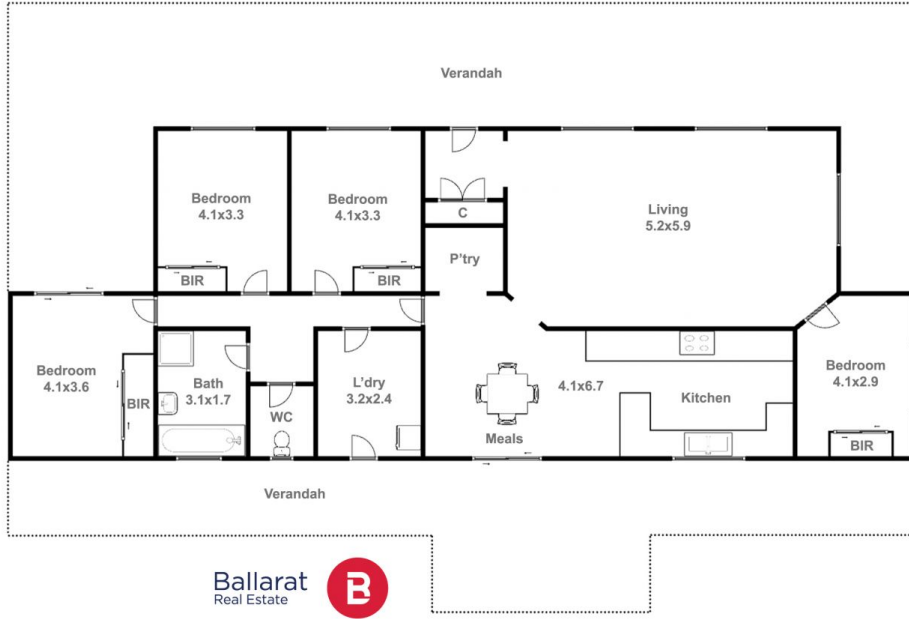


James Waterhouse

03 53312233

0408 382 551

32 Wattle Dale Rd **Enfield**



James Waterhouse 0408 382 551

This plan is for illustrative purposes only, floor plan proportions and scale are approximate. Plan prepared by PLP Ballarat © 2023 for Ballarat Real Estate.