

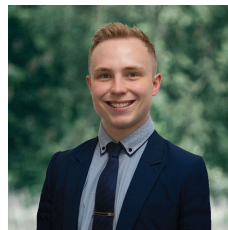


## 15 Emmy Drive Miners Rest VIC

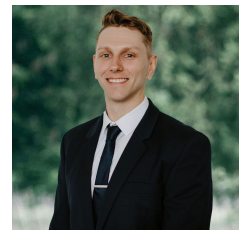
4 2 2

Nestled in the charming landscape of Miners Rest, this exquisite new home that captivates with views of the picturesque parklands and Burrumbeet Creek unfolds on a spacious 595m<sup>2</sup> (approx) plot of land. This retreat is mere moments from the vibrant Lucas Town Centre and the shopping delights of Stockland Wendouree, top-notch schools and the Western Highway's accessibility ensures a hassle-free daily commute, making it a fantastic place for a growing family to call home. As you approach this property, a welcoming brick veneer facade, a generous double lock-up garage, convenient side access and a low-maintenance front garden adorned with charming rock features greet you. This brand-new residence, ready for you to move in, features a total of four generously sized bedrooms. The master suite boasts a walk-in robe and an ensuite with a double vanity, shower and to ...

**Price** : \$ 600,000  
**Land Size** : 595 sqm  
**View** : <https://www.ballaratrealestate.com.au/sale/vic/ballarat-western-district/miners-rest/residential/house/7816943>



**Lachlan Sylvia**  
03 53312233  
0458 068 234



**Chris Just**  
5331 2233  
0438 235 293



#### DISCLAIMER

PLANS SHOWN ARE FOR MARKETING PURPOSES ONLY. ALL DIMENSIONS ARE APPROXIMATE AND NOT TO SCALE. THEY ARE SUBJECT TO ERRORS AND INACCURACIES AND NO LIABILITY WILL BE ACCEPTED. INTERESTED PARTIES SHOULD MAKE THEIR OWN INQUIRES.

Ballarat  
Real Estate

