

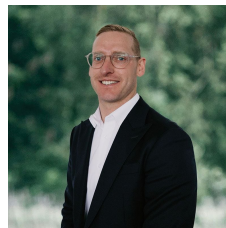


11 Verbena Grove Wendouree VIC

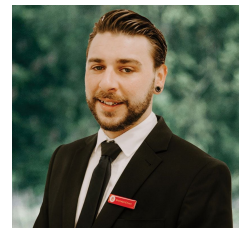
3 1 2

Situated on a large block of approximately 668 sqm with development potential (STCA) is this Wendouree property. Close to Stockland, local schools and public transport and with easy access to the Western Highway this home presents a great opportunity for an astute buyer to secure a property in a fast developing part of town. The home features three bedrooms, one bathroom, a large living area, large kitchen with gas cooking and side access through to the large rear yard that features a double shed. Please note build plans included are proposed. Don't miss out on this exciting opportunity, to schedule your viewing contact Mitch Couch on 0423 543 023.

Price : \$ 265,000
Land Size : 688 sqm
View : <https://www.ballaratrealestate.com.au/sale/vic/ballarat-western-district/wendouree/residential/house/7808507>



Mitchell Couch
03 53312233
0423543023



Brendan Elliott
03 5331 2233
0459 976 132

11 Verbena Grove **Wendouree**



Mitchell Couch 0478 049 401

This plan is for illustrative purposes only, floor plan proportions and scale are approximate. Plan prepared by PLP Ballarat © 2023 for Ballarat Real Estate.