



## 20 Continuance Way Delacombe VIC

4 2 2

Nestled in the highly sought-after Delacombe neighborhood, this modern family abode beckons with open arms, resting graciously on a sprawling 679m2 (approx) parcel of land.

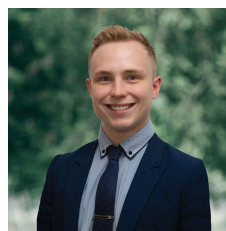
Positioned within easy reach of the vibrant Delecombe Town Centre, this residence is a gateway to all that this thriving hub has to offer. Plus, with medical facilities, daycare, primary schools and secondary schools in close proximity, it's the ideal haven for a growing family.

As you approach, you'll be captivated by the property's well-manicured front lawns, the inviting soft brick veneer facade, a double lock-up garage and convenient side access leading to a rear garage, ensuring ample space for all your parking needs.

**Price** : \$ 585,000

**Land Size** : 679 sqm

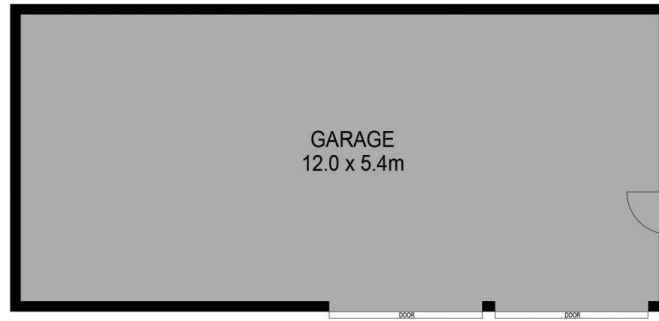
**View** : <https://www.ballaratrealestate.com.au/sale/vic/ballarat-western-district/delacombe/residential/house/7808455>



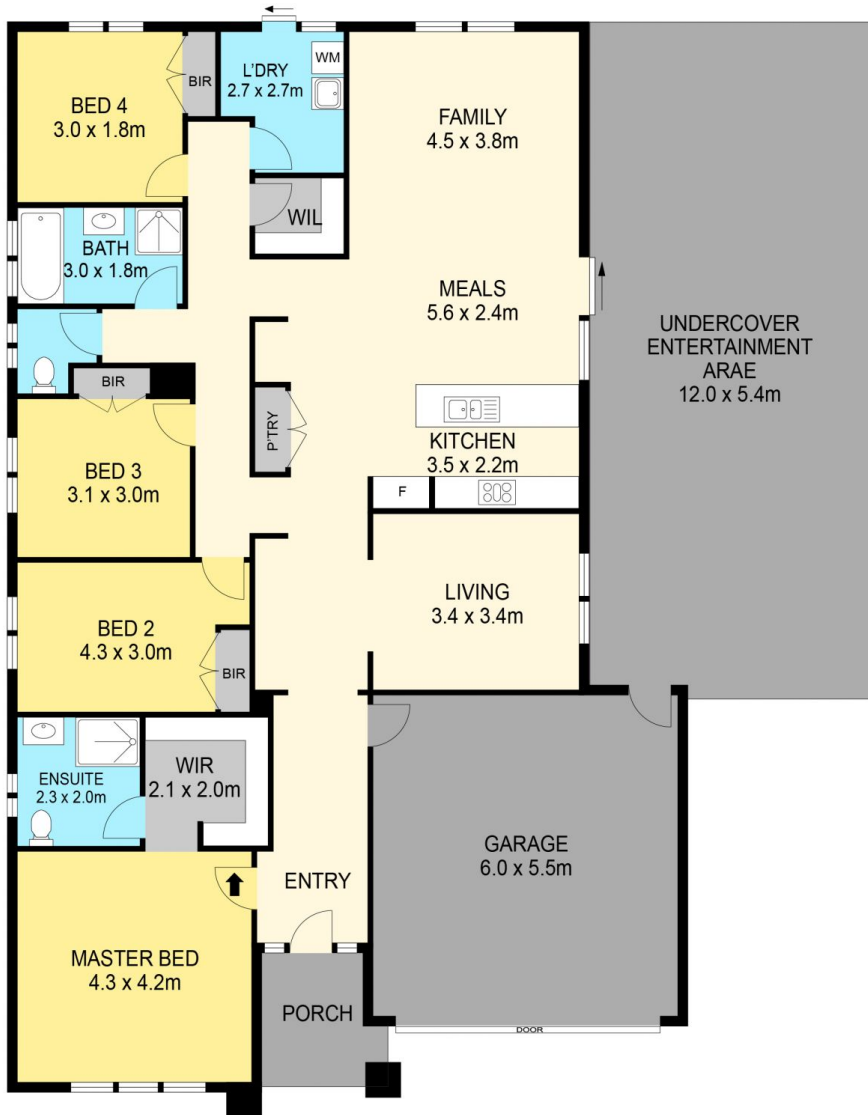
**Lachlan Sylvia**  
03 53312233  
0458 068 234



**Chris Just**  
5331 2233  
0438 235 293



(NOT IN POSITION)



**DISCLAIMER**

PLANS SHOWN ARE FOR MARKETING PURPOSES ONLY. ALL DIMENSIONS ARE APPROXIMATE AND NOT TO SCALE. THEY ARE SUBJECT TO ERRORS AND INACCURACIES AND NO LIABILITY WILL BE ACCEPTED. INTERESTED PARTIES SHOULD MAKE THEIR OWN INQUIRIES.

**Ballarat**  
Real Estate

