



**1/211 Kline Street Ballarat East VIC**

3 2 2

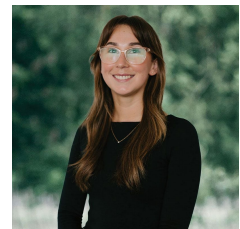
Located in sought after Ballarat East, close to shops, schools, the Eureka Centre and Ballarat CBD is this uniquely spacious three bedroom townhouse. Set on a massive 509m<sup>2</sup> (approx) parcel of land the property offers the best of modern living offering a spaciously open plan kitchen and meals area with an adjoining living room. The three bedrooms are well appointed with the master bedroom offering a walk in robe and full ensuite. The other two bedrooms are serviced by the central family bathroom. The home also features gas central heating throughout and a double lock up garage with direct internal access and remote roller door. The large, enclosed yard is a real standout giving the kids and pets space to play. A property that offers such generous proportions inside and out is hard to find, so be quick!

**Price** : \$ 465,000

**View** : <https://www.ballaratrealestate.com.au/sale/vic/ballarat-western-district/ballarat-east/residential/unit/7775705>



**David Morrison**  
03 53312233  
0438 342 227



**Chelsea Skewes**  
5331 2233  
0448913072



Approx House Area 141m<sup>2</sup>  
 Approx Land Area 509m<sup>2</sup>



Whilst [bwrn.com.au](http://bwrn.com.au) has made every attempt to ensure the accuracy of the floor plan contained here, measurements are approximate and no responsibility is taken for any error, omission, or mis-statement. This plan is for illustrative purposes only.

**1/211 Kline Street, Ballarat East**

