



196 Scarsdale-Pitfield Road Newtown VIC

2 1 2

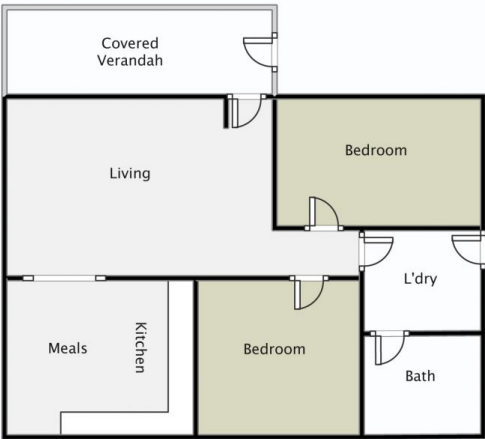
This starter home in Scarsdale is the ideal option for those looking for a simple and spacious family home in a convenient location just a 15-minute drive from Ballarat offering the benefits of both a quiet rural setting on approx 3000sqm of land and close proximity to the Scarsdale township amenities. The house boasts two bedrooms, making it suitable for a small family or a couple looking for additional space, there is a main living area that is spacious enough to provide plenty of room for family gatherings and relaxation plus a wood fire that adds a cozy and inviting atmosphere. The open-style kitchen comes with ample cupboard space, gas hot plates, and a meals area. The private bathroom features a shower over the bath ensuring versatility for both quick showers and leisurely baths. Having an internal toilet and an easy-access laundry adds to the convenience ...

Price : \$ 330,000
Land Size : 3000 sqm
View : <https://www.ballaratrealestate.com.au/sale/vic/ballarat-western-district/newtown/residential/house/7764015>



James Waterhouse
03 53312233
0408 382 551

196 Scarsdale Pitfield Rd **Newtown**



James Waterhouse 0408 382 551

This plan is for illustrative purposes only, floor plan proportions and scale are approximate. Plan prepared by PLP Ballarat © 2023 for Ballarat Real Estate.