

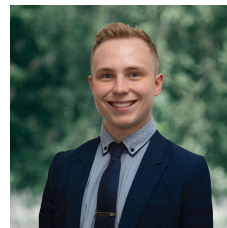


**7 Williams Street Wendouree VIC**

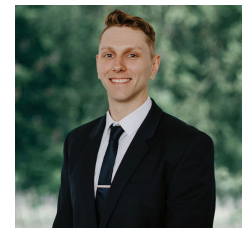
3 1 2

Nestled within the serene surroundings of Wendouree, this charming family residence graces a generous 658m2 plot of land. Boasting close proximity to an array of conveniences, such as the Stockland Wendouree Plaza, Lake Wendouree, the Grammar School, Mars Stadium and a plethora of amenities like supermarkets, takeout options, medical facilities, daycare centers and schools, this home offers an ideal opportunity for a family seeking a place to call their own. The exterior of the home presents an inviting north facing weatherboard facade, adorned with lush lawns and a meticulously landscaped front garden, complete with a charming brick chimney. Stepping inside, you'll be greeted by ornate cornices and picture rails that exude timeless charm, creating an inviting entrance that seamlessly flows into the lounge room. Here, you'll find a gas heater, ceiling fan an ...

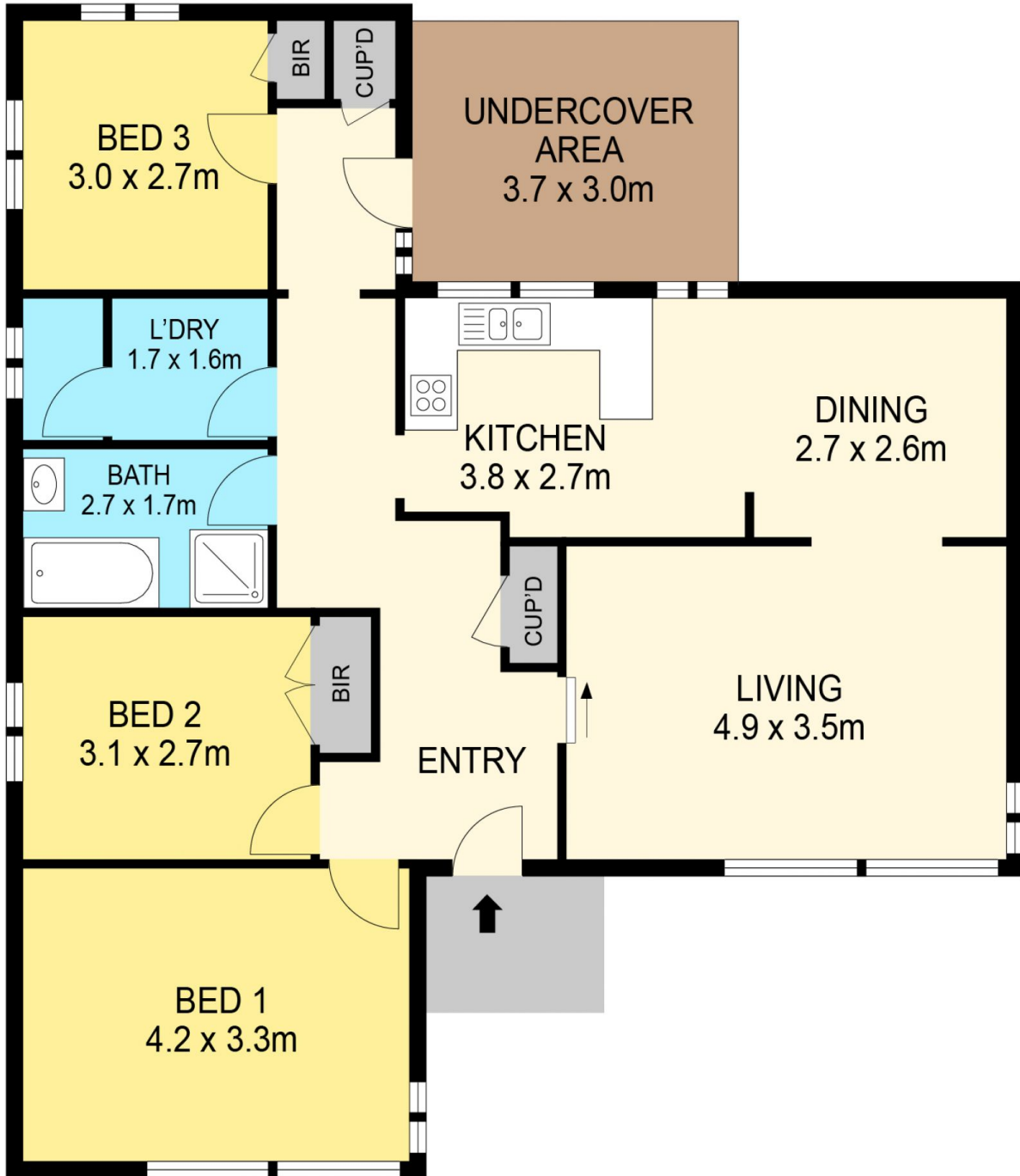
**Price** : \$ 400,000  
**Land Size** : 658 sqm  
**View** : <https://www.ballaratrealestate.com.au/sale/vic/ballarat-western-district/wendouree/residential/house/7761993>



**Lachlan Sylvia**  
 03 53312233  
 0458 068 234



**Chris Just**  
 5331 2233  
 0438 235 293



**DISCLAIMER**

PLANS SHOWN ARE FOR MARKETING PURPOSES ONLY. ALL DIMENSIONS ARE APPROXIMATE AND NOT TO SCALE. THEY ARE SUBJECT TO ERRORS AND INACCURACIES AND NO LIABILITY WILL BE ACCEPTED. INTERESTED PARTIES SHOULD MAKE THEIR OWN INQUIRIES.

**Ballarat**  
Real Estate

