



7 Insignia Boulevard Alfredton VIC

3 2 5

Nestled within the highly sought-after Insignia estate, this modern family abode occupies a generous 561m2 (approx) parcel of land.

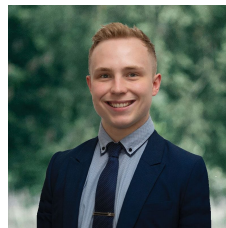
Ideally positioned within walking distance of the Ballarat Golf Course and Ballarat High School and in close proximity to the wealth of amenities at the Lucas Town Centre, The YMCA, Lake Wendouree and Victoria Park, this residence is a dream for a growing family.

Upon first glance, the home presents an elegant modern brick veneer façade adorned with pillars, set amidst a low-maintenance front yard, offering convenient side access to the rear 6x8 shed providing ample off-street parking.

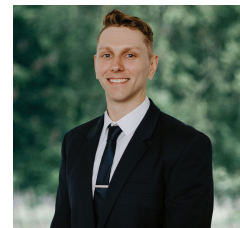
Price : \$ 690,000

Land Size : 561 sqm

View : <https://www.ballaratrealestate.com.au/sale/vic/ballarat-western-district/alfredton/residential/house/7746597>



Lachlan Sylvia
03 53312233
0458 068 234



Chris Just
5331 2233
0438 235 293



DISCLAIMER

PLANS SHOWN ARE FOR MARKETING PURPOSES ONLY. ALL DIMENSIONS ARE APPROXIMATE AND NOT TO SCALE. THEY ARE SUBJECT TO ERRORS AND INACCURACIES AND NO LIABILITY WILL BE ACCEPTED. INTERESTED PARTIES SHOULD MAKE THEIR OWN INQUIRIES.

Ballarat
Real Estate

