

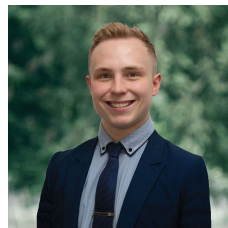


### 412 Learmonth Road Mitchell Park VIC

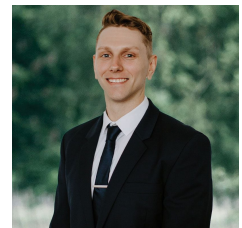
3 1 4

Nestled within the tranquil embrace of Mitchell Park, a hidden gem awaits. A spacious family haven sprawled across an expansive 588m<sup>2</sup> (approx) of land. This residence sits within arm's reach of the bustling heart of Lucas Town Centre and the retail utopia of Stockland Wendouree. Its strategic location also ensures easy access to renowned schools and the convenience of the Western Highway, making this one for top of the list. The moment you approach, you're greeted by a charming brick veneer facade, framed by lush lawns and meticulously manicured gardens. There's no need to worry about parking, this haven boasts ample off-street parking for you and your guests. Upon stepping inside, you're greeted by a welcoming foyer, a spot to kick off the shoes before venturing further into the home. The lounge room beckons comfort, offering a cozy retreat year-round with ...

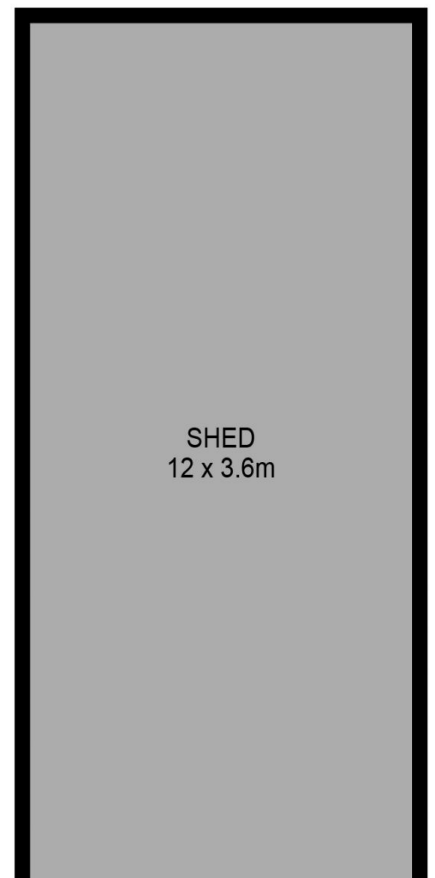
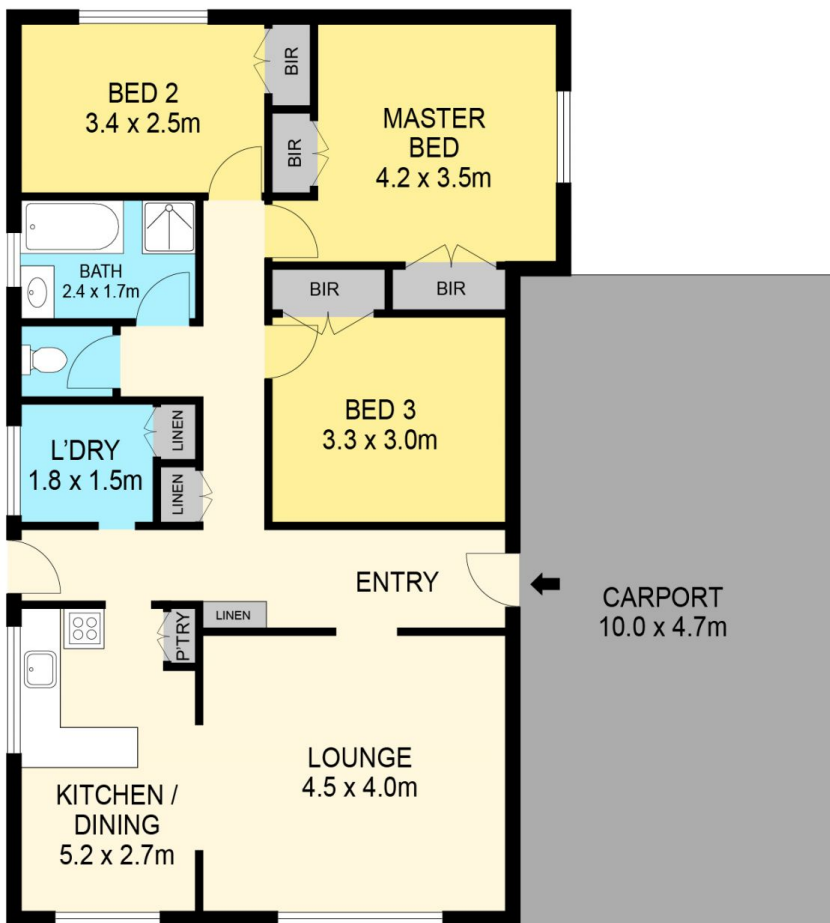
**Price** : \$ 420,000  
**Land Size** : 588 sqm  
**View** : <https://www.ballaratrealestate.com.au/sale/vic/ballarat-western-district/mitchell-park/residential/house/7735894>



**Lachlan Sylvia**  
03 53312233  
0458 068 234



**Chris Just**  
5331 2233  
0438 235 293



(NOT IN POSITION)

#### DISCLAIMER

PLANS SHOWN ARE FOR MARKETING PURPOSES ONLY. ALL DIMENSIONS ARE APPROXIMATE AND NOT TO SCALE. THEY ARE SUBJECT TO ERRORS AND INACCURACIES AND NO LIABILITY WILL BE ACCEPTED. INTERESTED PARTIES SHOULD MAKE THEIR OWN INQUIRES.

Ballarat  
Real Estate

