

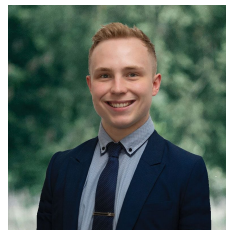


19 Lowry Crescent Miners Rest VIC

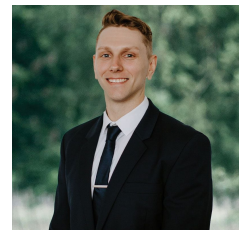
3 3 6

Nestled in the heart of charming Miners Rest, you'll discover a family haven that beckons with open arms, resting comfortably on a generous 712m2 (approx) canvas of land. This haven in is close proximity to the bustling Lucas Town Centre and the retail treasures of Stockland Wendouree. Top-tier schools are within a stone's throw, and the Western Highway's convenience ensures your daily commute is a breeze, making it the perfect place to call home. As you approach, the home's exterior showcases a striking rendered facade adorned with elegant stack stone accents. A secure front yard greets you, decorated with vibrant roses and a curated collection of flourishing flora. Step inside and an inviting entrance leads to a capacious lounge, continuing into the heart of the home, a harmonious blend of kitchen, living and dining spaces, bathed in natural light and offe ...

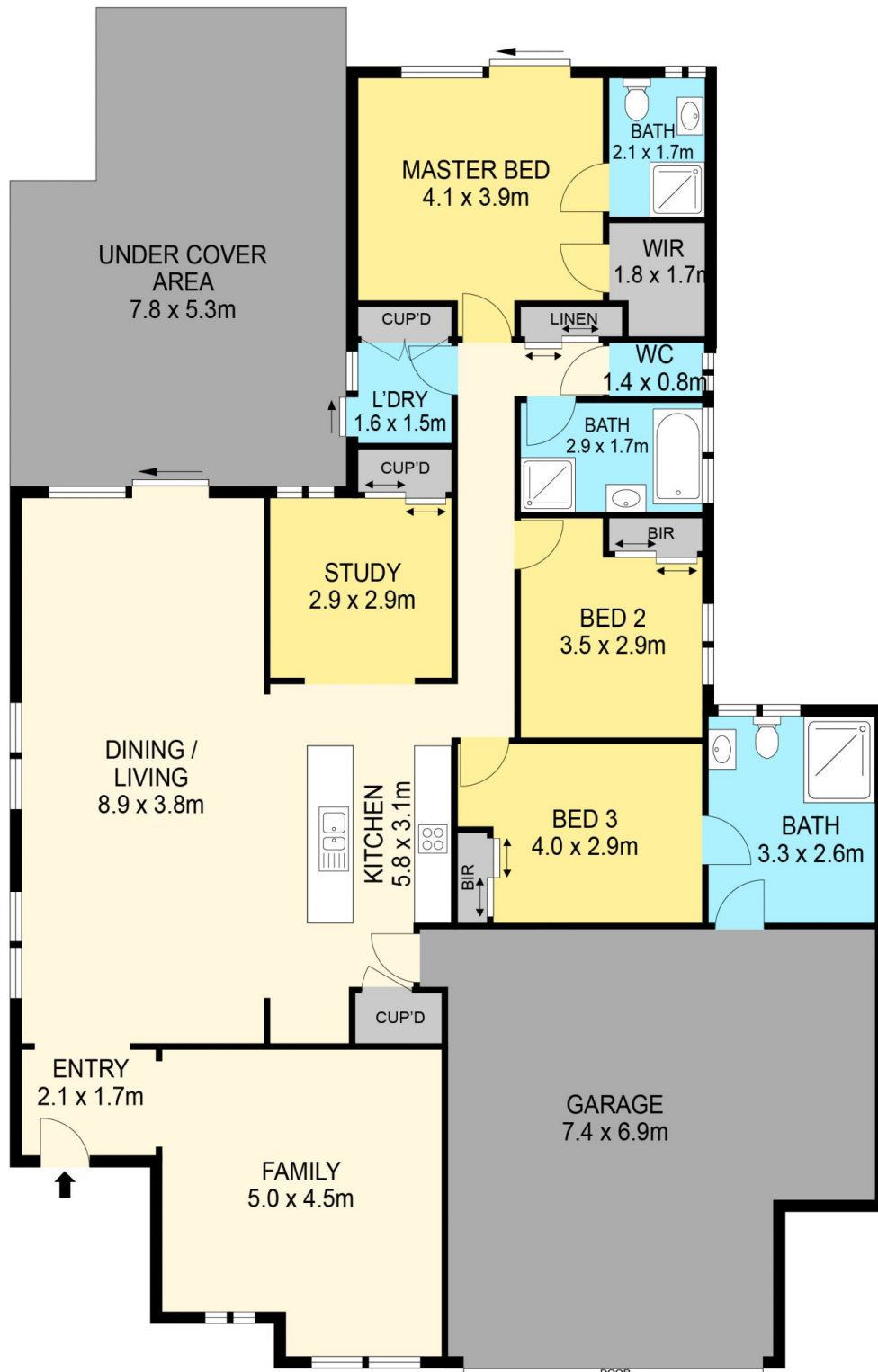
Price : \$ 620,000
Land Size : 712 sqm
View : <https://www.ballaratrealestate.com.au/sale/vic/ballarat-western-district/miners-rest/residential/house/7723895>



Lachlan Sylvia
 03 53312233
 0458 068 234



Chris Just
 5331 2233
 0438 235 293



DISCLAIMER

PLANS SHOWN ARE FOR MARKETING PURPOSES ONLY, ALL DIMENSIONS ARE APPROXIMATE AND NOT TO SCALE. THEY ARE SUBJECT TO ERRORS AND INACCURACIES AND NO LIABILITY WILL BE ACCEPTED. INTERESTED PARTIES SHOULD MAKE THEIR OWN INQUIRES.

Ballarat
Real Estate

