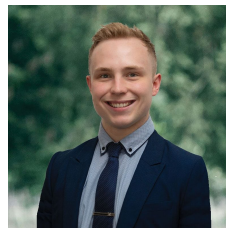


13 Southdown Court Alfredton VIC

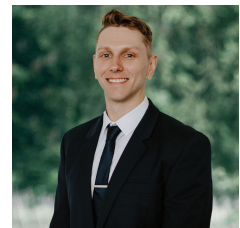
4 2 2

Nestled in the heart of Alfredton, in a tranquil court, lies an exquisite family abode resting on a sprawling 840m² parcel of land. With everything The Lucas Town Centre has to offer just a stone's throw away. From exceptional schools and daycare facilities to medical services, all at your fingertips and residing within the coveted Ballarat High School catchment zone solidifies this location as ideal for a thriving family. As you approach this residence, a captivating brick veneer facade adorned with elegant pillars welcomes you. Lush front lawns and a meticulously landscaped garden, complete with manicured hedges, set the scene. Step inside and the grandeur continues. Hardwood flooring graces your path, complemented by timber accents, ceiling roses and decorative cornices, elevating the home's charm. The front lounge is spacious, as is the adjacent bedroom, ...

Price : \$ 720,000
Land Size : 840 sqm
View : <https://www.ballaratrealestate.com.au/sale/vic/ballarat-western-district/alfredton/residential/house/7723891>



Lachlan Sylvia
 03 53312233
 0458 068 234



Chris Just
 5331 2233
 0438 235 293



DISCLAIMER

PLANS SHOWN ARE FOR MARKETING PURPOSES ONLY, ALL DIMENSIONS ARE APPROXIMATE AND NOT TO SCALE. THEY ARE SUBJECT TO ERRORS AND INACCURACIES AND NO LIABILITY WILL BE ACCEPTED. INTERESTED PARTIES SHOULD MAKE THEIR OWN INQUIRIES.

Ballarat
Real Estate

