

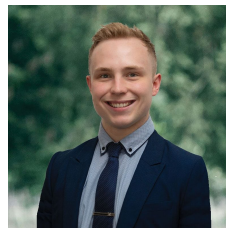


6 Kara Court Sebastopol VIC

3 1 3

Nestled within a tranquil court, this elegantly renovated home graces a substantial 909m² (approx.) parcel of land. Ideally located in close proximity to the Delacombe Town Centre, esteemed primary and secondary schools, medical facilities, and daycare centers, this locale proves to be an idyllic haven for families. The home boasts a solid brick veneer facade adorned with verdant front lawns and effortlessly maintained gardens. Upon entry, the front-appointed lounge and dining area unveil a symphony of enhancements done to the home, including freshly applied paint, new carpets and stylish blinds. Transitioning to the kitchen, a double stainless-steel sink, gas stove and oven, dishwasher and abundant timber counter tops await. The home accommodates three generously sized bedrooms, all featuring built-in robes and external window awnings. The primary bathroom ...

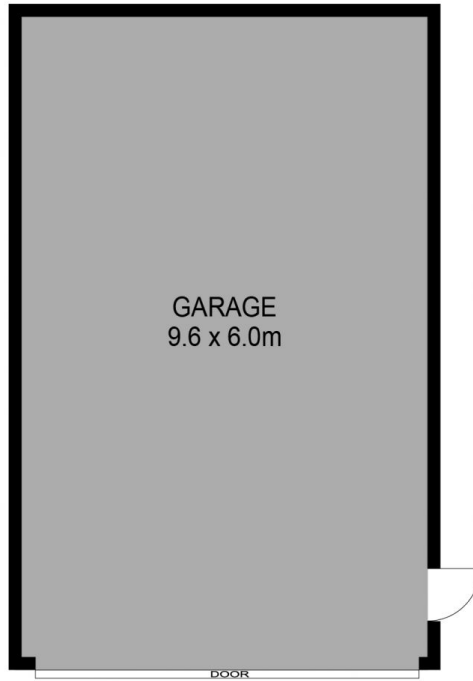
Price : \$ 427,500
Land Size : 909 sqm
View : <https://www.ballaratrealstate.com.au/sale/vic/ballarat-western-district/sebastopol/residential/house/7716130>



Lachlan Sylvia
 03 53312233
 0458 068 234



Chris Just
 5331 2233
 0438 235 293



(NOT IN POSITION)



DISCLAIMER

PLANS SHOWN ARE FOR MARKETING PURPOSES ONLY, ALL DIMENSIONS ARE APPROXIMATE AND NOT TO SCALE. THEY ARE SUBJECT TO ERRORS AND INACCURACIES AND NO LIABILITY WILL BE ACCEPTED. INTERESTED PARTIES SHOULD MAKE THEIR OWN INQUIRIES.

Ballarat
Real Estate

