



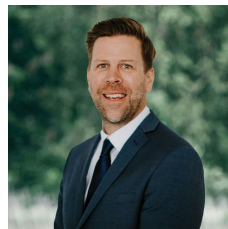
2 Muir Crescent Newington VIC

3 1 2

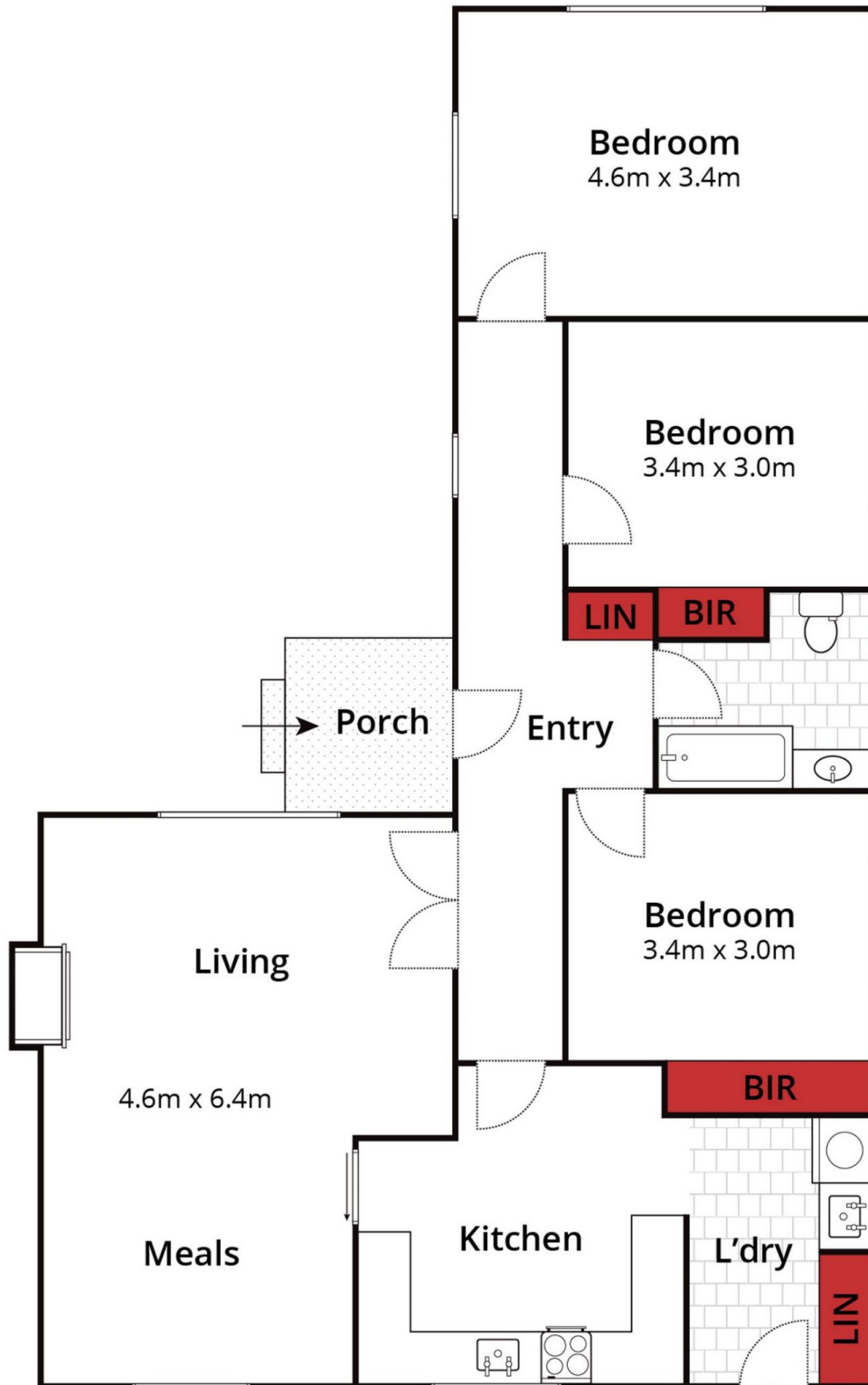
Located within an incredible cluster of charming mid-century homes, 2 Muir Crescent Newington is an exciting opportunity for an astute buyer looking to secure a premium piece of Ballarat real estate. Located close to parks, sporting fields, schools, local cafes and the CBD, this sold brick veneer is waiting to be transformed into beautiful home worthy of its incredible location. Featuring three generously sized bedrooms, a large living/meals area, period features throughout, a separate garage and set on a spacious allotment of 529sqm (approx), this home is a must inspect. Call Ballarat Real Estate's exclusive listing agent Richard Gent on 0427 536 062 to secure this property today.

Price : \$ 480,000

View : <https://www.ballaratrealestate.com.au/sale/vic/ballarat-western-district/newington/residential/house/7708218>



Richard Gent
5331 2233
0427 536 062



Approx House Area 134m²
 Approx Land Area 529m²



Whilst bwrn.com.au has made every attempt to ensure the accuracy of the floor plan contained here, measurements are approximate and no responsibility is taken for any error, omission, or mis-statement. This plan is for illustrative purposes only.

2 Muir Crescent, Newington

Ballarat
 Real Estate

