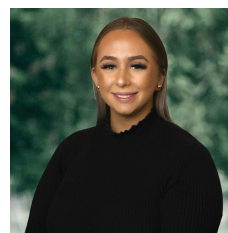


### 1/3 Lilac Court Wendouree VIC

2 1 1

Situated in a quiet court in the ever-popular suburb of Wendouree. Located within walking distance of Wendouree Primary School and a short drive to sporting facilities, Stockland shopping centre, Lake Wendouree and the Wendouree train station. Once stepping in the front door of this property you will notice two generously sized bedrooms which both feature built in robes. Heading towards the back of the property you will find an open plan living and dining space and a great size kitchen area with plenty of cupboard and bench space. Heading outside there is a fully enclosed courtyard off the living room and a single lock up garage. With central heating throughout and a separate laundry.

**View** : <https://www.ballaratrealestate.com.au/lease/vic/ballarat-western-district/wendouree/residential/townhouse/7701377>



**Grace Smith**  
03 53312233



**Riley Rees**