

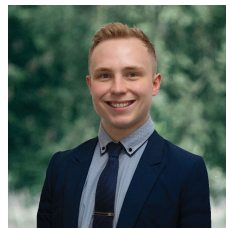


**1029 Grevillea Road Wendouree VIC**

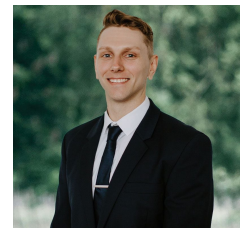
3 1 3

Welcome to this charming home nestled in the heart of Wendouree on a generous 671m<sup>2</sup> (approx.) allotment. With its prime location in close proximity to schools, shops and sporting facilities, as well as easy access to the Western Highway makes this property one for the top of the list. As you approach, you'll be greeted by a lovely brick veneer facade with meticulous lawns, complemented by a delightful front garden featuring a graceful birch tree and shrubs lining the fence. Step onto the front veranda, which leads you to the inviting entrance. Once inside, you'll be enchanted by the updated flooring that flows seamlessly into the front appointed lounge room, creating the perfect space for your family to gather and create cherished memories. The kitchen and dining area are a haven for home chefs, equipped with an AEG wall oven, Fisher & Paykal gas stove, dish ...

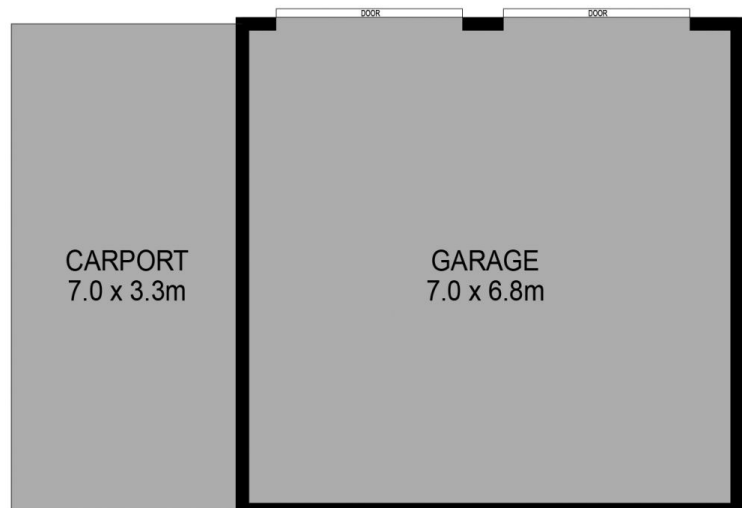
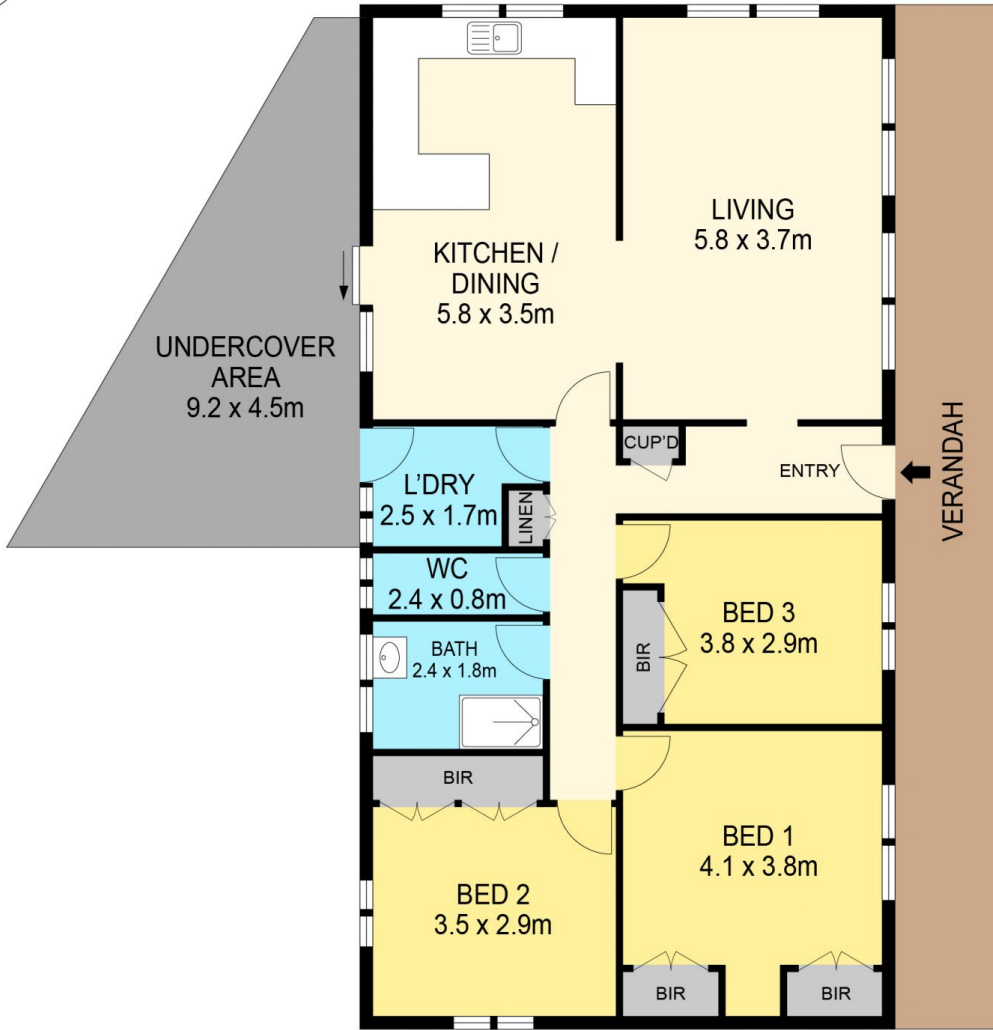
**Price** : \$ 490,000  
**Land Size** : 671 sqm  
**View** : <https://www.ballaratrealestate.com.au/sale/view/ballarat-western-district/wendouree/residential/house/7690057>



**Lachlan Sylvia**  
 03 53312233  
 0458 068 234



**Chris Just**  
 5331 2233  
 0438 235 293



(NOT IN POSITION)

**DISCLAIMER**

PLANS SHOWN ARE FOR MARKETING PURPOSES ONLY. ALL DIMENSIONS ARE APPROXIMATE AND NOT TO SCALE. THEY ARE SUBJECT TO ERRORS AND INACCURACIES AND NO LIABILITY WILL BE ACCEPTED. INTERESTED PARTIES SHOULD MAKE THEIR OWN INQUIRES.

**Ballarat**  
Real Estate

