

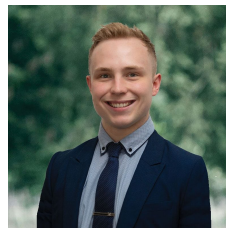


**320A Albert Street Sebastopol VIC**

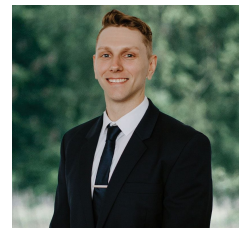
2 1 2

Discover a hidden gem in Sebastopol, an enchanting brick veneer unit nestled on a comfortable 322m<sup>2</sup> (approx) allotment. Embrace the perfect balance of convenience and charm, as this splendid abode sits within close proximity to primary & secondary schools, shops, sporting facilities and medical centers. With easy access to the Midland Highway, getting around is a breeze, making it an ideal location to call home. Step inside and be captivated by the two beautifully appointed bedrooms, complete with built-in robes and ceiling fans. The open-plan kitchen, dining and living area are bathed in natural light, creating a warm and inviting space. The kitchen itself boasts a 600mm gas oven/stove, dual stainless steel sink, island bench and ample cupboard space to store all your kitchen essentials. Unwind in the well-appointed bathroom, which offers a shower, relaxing ...

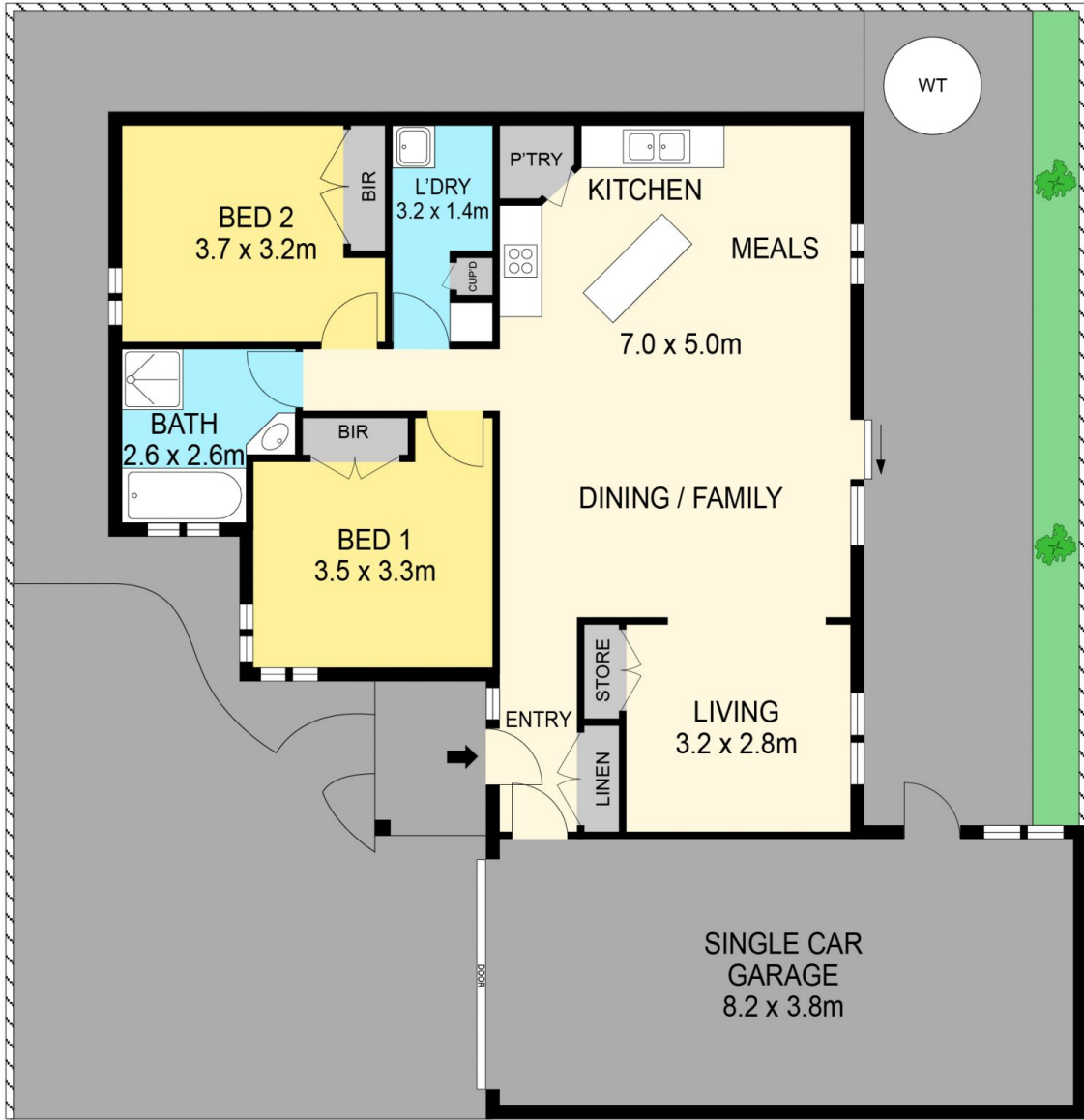
**Price** : \$ 322,500  
**Land Size** : 322 sqm  
**View** : <https://www.ballaratrealestate.com.au/sale/vic/ballarat-western-district/sebastopol/residential/house/7690056>



**Lachlan Sylvia**  
03 53312233  
0458 068 234



**Chris Just**  
5331 2233  
0438 235 293



**DISCLAIMER**

PLANS SHOWN ARE FOR MARKETING PURPOSES ONLY. ALL DIMENSIONS ARE APPROXIMATE AND NOT TO SCALE. THEY ARE SUBJECT TO ERRORS AND INACCURACIES AND NO LIABILITY WILL BE ACCEPTED. INTERESTED PARTIES SHOULD MAKE THEIR OWN INQUIRES.

**Ballarat**  
Real Estate

