



## 2 The Horizon Mount Helen VIC

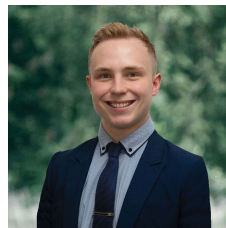
3 2 2

Nestled in the charming Mount Helen, discover this exquisite family home sprawled across an ample 948m<sup>2</sup> (approx) plot of land. Perfectly situated just minutes away from multiple primary and secondary colleges, IBM, Federation University, Midvale shopping center and the convenient Midland Highway, this location is a dream come true for any thriving family. From the moment you set eyes on this home, you'll be captivated by its elegant brick veneer with enchanting rendered archway features. Stroll along the pathways lined with ornamental hedges and lush lawns, a delightful prelude to the beauty that awaits inside. Step into the grand entrance adorned with decorative cornices and soothing tones, leading you into the inviting family area. The front appointed master suite offers generous proportions, complemented by his and hers walk-in robes and a luxurious ensui ...

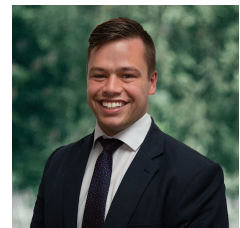
**Price** : \$ 760,000

**Land Size** : 948 sqm

**View** : <https://www.ballaratrealestate.com.au/sale/vic/ballarat-western-district/mount-helen/residential/house/7667644>



**Lachlan Sylvia**  
03 53312233  
0458 068 234



**Alex Stepnell**  
03 53312233  
0407373507



**DISCLAIMER**

PLANS SHOWN ARE FOR MARKETING PURPOSES ONLY, ALL DIMENSIONS ARE APPROXIMATE AND NOT TO SCALE. THEY ARE SUBJECT TO ERRORS AND INACCURACIES AND NO LIABILITY WILL BE ACCEPTED. INTERESTED PARTIES SHOULD MAKE THEIR OWN INQUIRES.

**Ballarat**  
Real Estate

