



1/46 Spencer Street Sebastopol VIC

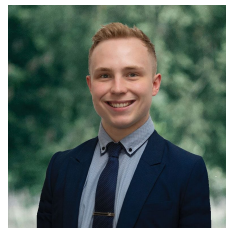
2 1 1

Nestled in the heart of Sebastopol, this charming rendered unit sits on an allotment of 289m² (approx). Its prime location offers close proximity to schools, supermarkets, medical centers, sporting facilities and convenient access to the Midland Highway, making it an ideal place to call home. As you approach the property, you are greeted by an inviting rendered facade and an enclosed front yard, complete with a lush lawn area and adorned with trees along the front fence. Step inside, and you'll find a cozy lounge room, thoughtfully positioned at the front of the house. The kitchen and dining area are a chef's delight, featuring a gas stove/oven, dishwasher, double sink and a pantry with ample cupboard space for all your culinary needs. The home boasts two bedrooms, both fitted with built-in robes, providing plenty of storage space. The bathroom boasts a show ...

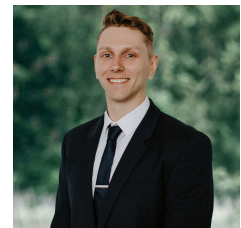
Price : \$ 310,000

Land Size : 289 sqm

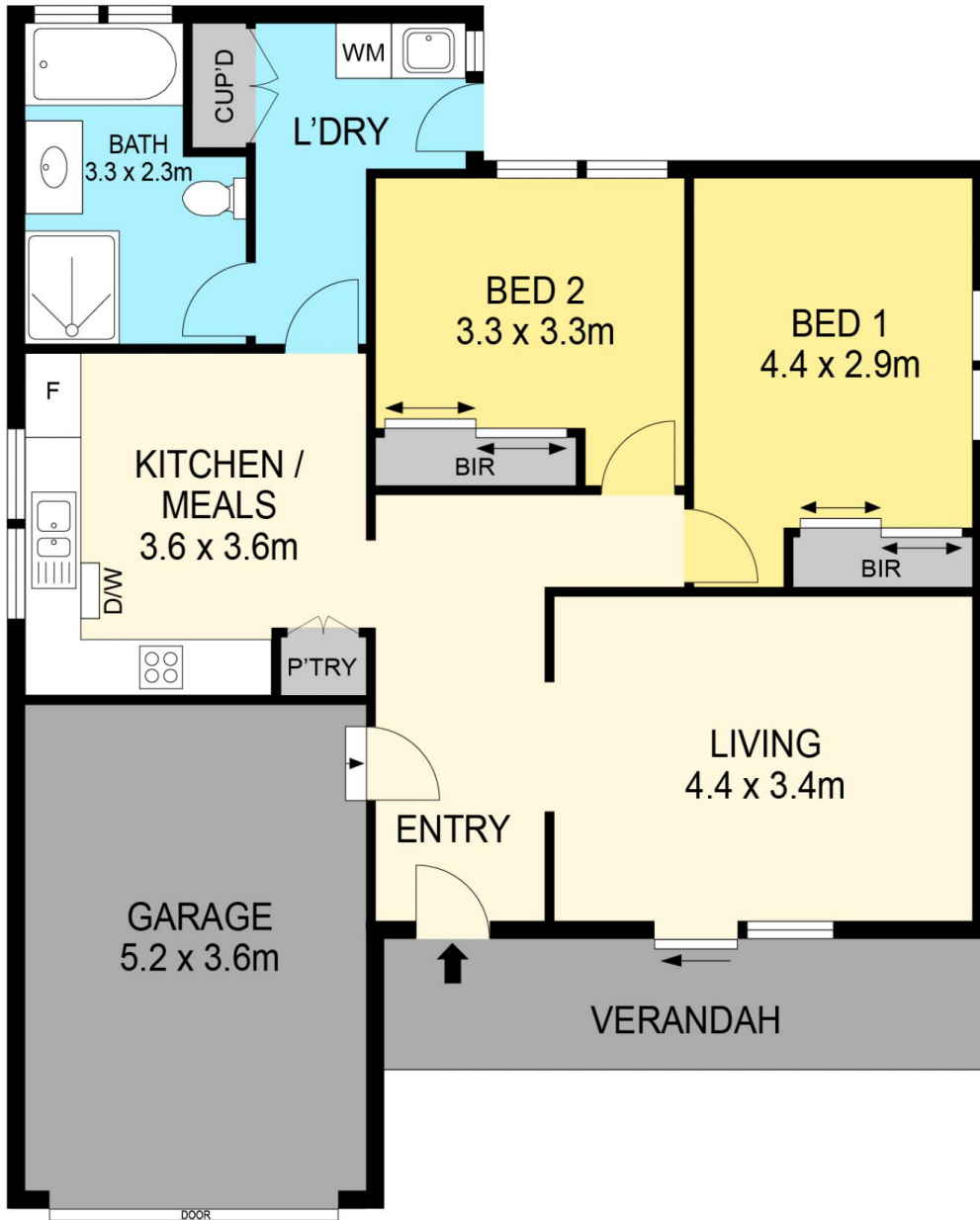
View : <https://www.ballaratrealestate.com.au/sale/unit/ballarat-western-district/sebastopol/residential/unit/7657123>



Lachlan Sylvia
03 53312233
0458 068 234



Chris Just
5331 2233
0438 235 293



DISCLAIMER

PLANS SHOWN ARE FOR MARKETING PURPOSES ONLY, ALL DIMENSIONS ARE APPROXIMATE AND NOT TO SCALE. THEY ARE SUBJECT TO ERRORS AND INACCURACIES AND NO LIABILITY WILL BE ACCEPTED. INTERESTED PARTIES SHOULD MAKE THEIR OWN INQUIRES.

Ballarat
Real Estate

