

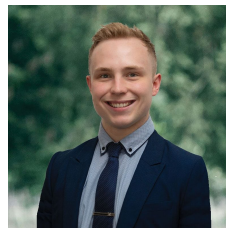


**27 Whitelaw Avenue Delacombe VIC**

3 1 3

Nestled in the charming Delacombe area, this brick veneer home is situated on a generous 643m<sup>2</sup> (approx) plot of land. Conveniently located near both primary and secondary schools, The Delacombe Town Centre and just a short drive to the vibrant Ballarat CBD, this is an ideal neighborhood to call home. The home boasts an attractive brick veneer facade and meticulously maintained front lawns, exuding a welcoming charm. As you step inside the home, you are greeted by a spacious lounge room adorned with air conditioning and electric heating, creating the perfect space for relaxation and unwinding. Transitioning into the kitchen and dining area through an archway, you'll discover a well-appointed kitchen including a freestanding gas stove/oven, a single sink, a breakfast bench and fridge space, complemented by beautiful timber cabinetry. This delightful home compr ...

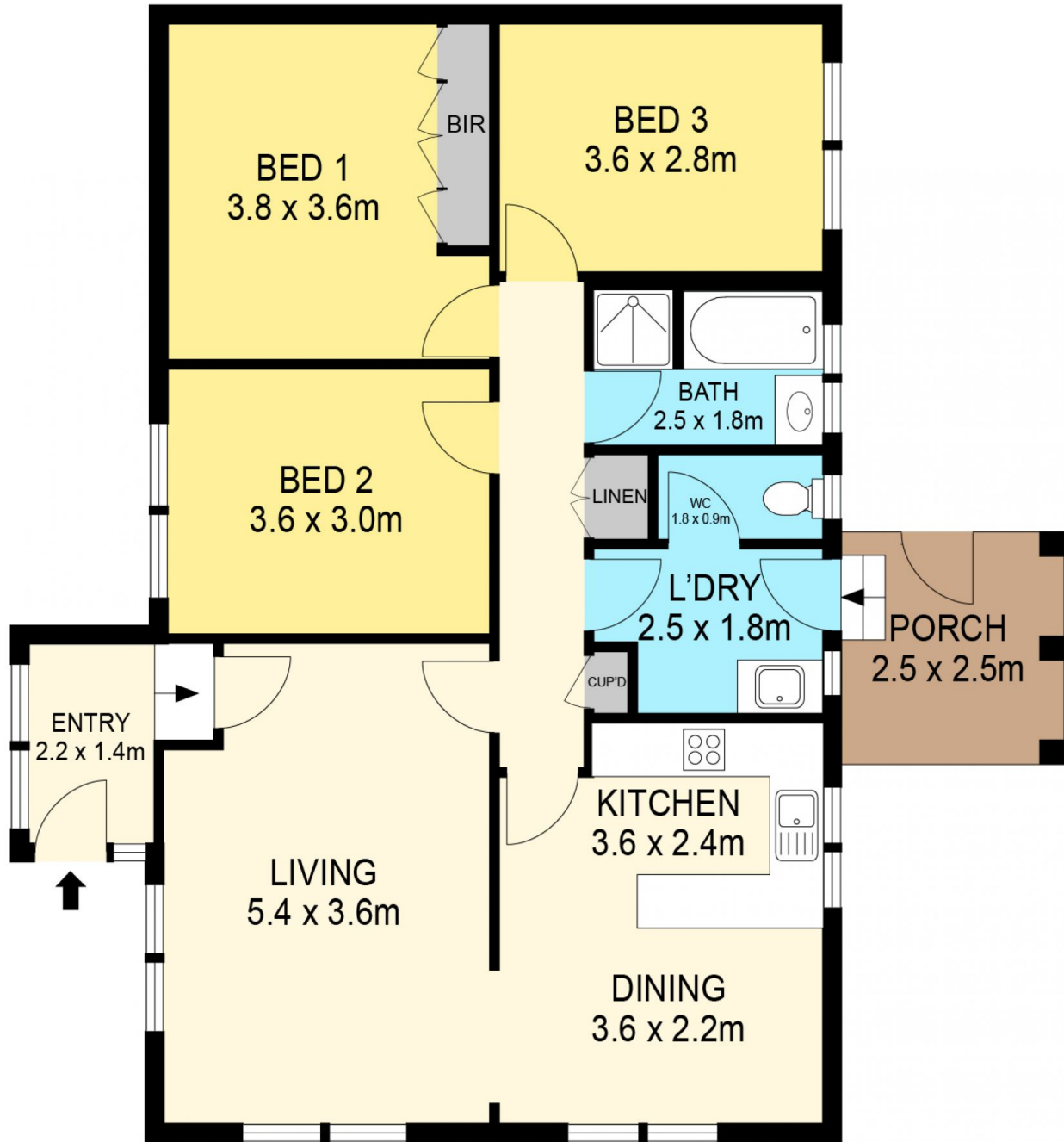
**Price** : \$380,000 - \$410,000  
**Land Size** : 643 sqm  
**View** : <https://www.ballaratrealstate.com.au/sale/vic/ballarat-western-district/delacombe/residential/house/7641896>



**Lachlan Sylvia**  
 03 53312233  
 0458 068 234



**Chris Just**  
 5331 2233  
 0438 235 293



**DISCLAIMER**

PLANS SHOWN ARE FOR MARKETING PURPOSES ONLY. ALL DIMENSIONS ARE APPROXIMATE AND NOT TO SCALE. THEY ARE SUBJECT TO ERRORS AND INACCURACIES AND NO LIABILITY WILL BE ACCEPTED. INTERESTED PARTIES SHOULD MAKE THEIR OWN INQUIRES.

**Ballarat**  
Real Estate

