

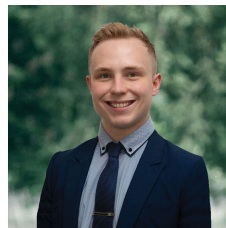


7 Kelvin Avenue Sebastopol VIC

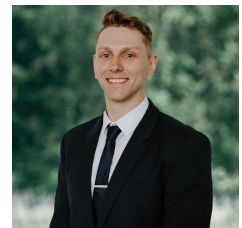
3 1 1

Nestled in the heart of Sebastopol, this exquisite home sits on a spacious 628m² (approx) allotment, ensuring a comfortable living experience. Its prime location offers close proximity to both Primary & Secondary schools, supermarkets, The Delacombe Town Centre, and Midland HWY, making it an ideal place to call home. As you approach the house, you'll be captivated by its charming weatherboard facade, a concreted driveway with convenient side access and well maintained front lawns. Upon entering the home, you'll be greeted by a welcoming entrance adorned with beautiful timber flooring and ornate cornices, setting the stage for the charm that awaits. The house features three generously sized bedrooms, two of which boast built-in robes. The family bathroom features a shower/bath and single vanity. Stepping into the lounge room through the barn door, you'll disc ...

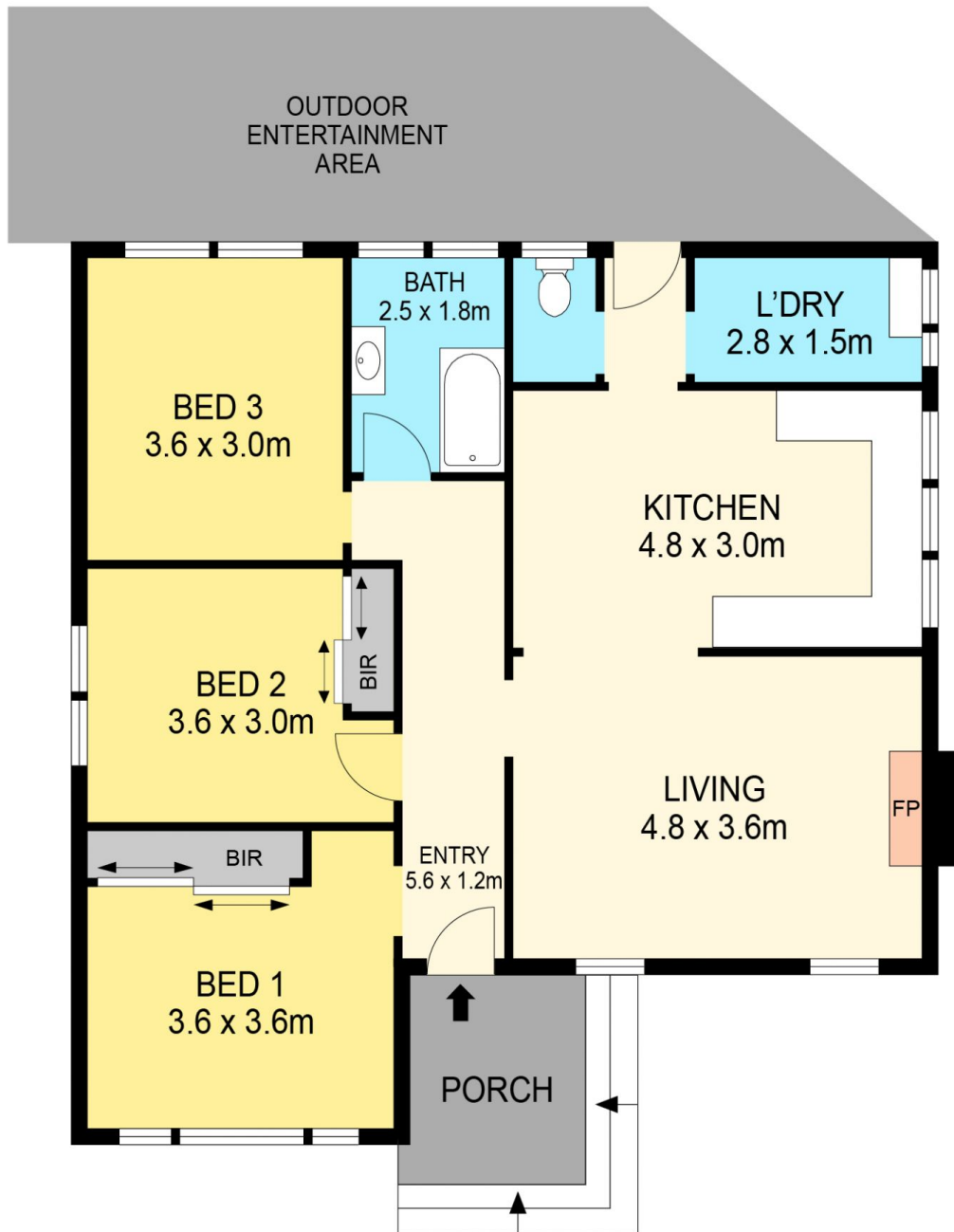
Price : \$400,000 - \$430,000
Land Size : 628 sqm
View : <https://www.ballaratrealstate.com.au/sale/vic/ballarat-western-district/sebastopol/residential/house/7641895>



Lachlan Sylvia
 03 53312233
 0458 068 234



Chris Just
 5331 2233
 0438 235 293



DISCLAIMER

PLANS SHOWN ARE FOR MARKETING PURPOSES ONLY. ALL DIMENSIONS ARE APPROXIMATE AND NOT TO SCALE. THEY ARE SUBJECT TO ERRORS AND INACCURACIES AND NO LIABILITY WILL BE ACCEPTED. INTERESTED PARTIES SHOULD MAKE THEIR OWN INQUIRES.

Ballarat
Real Estate

