



53 Lawrie Drive Alfredton VIC

4 2 2

Situated in the highly sought after suburb of Alfredton, this home is close to shops, walking tracks and highly anticipated Alfredton Primary School and St Thomas More Primary. You will be greeted as you enter this amazing home by the beautiful spotted gum floating timber floors and the 8.5-foot ceilings. Internally, this home features four spacious bedrooms, the master offers two large walk-in robes with the ensuite featuring double vanity, double shower, and a separate toilet. The three remaining bedrooms are of a generous size and all have built in robes. Off the main hallway you will find the first large living space which continues onto the second which also accommodates an open plan living, kitchen and dining. The kitchen features modern appliances including induction cooking and dishwasher. The large fridge cavity also has a water line. As you continu ...

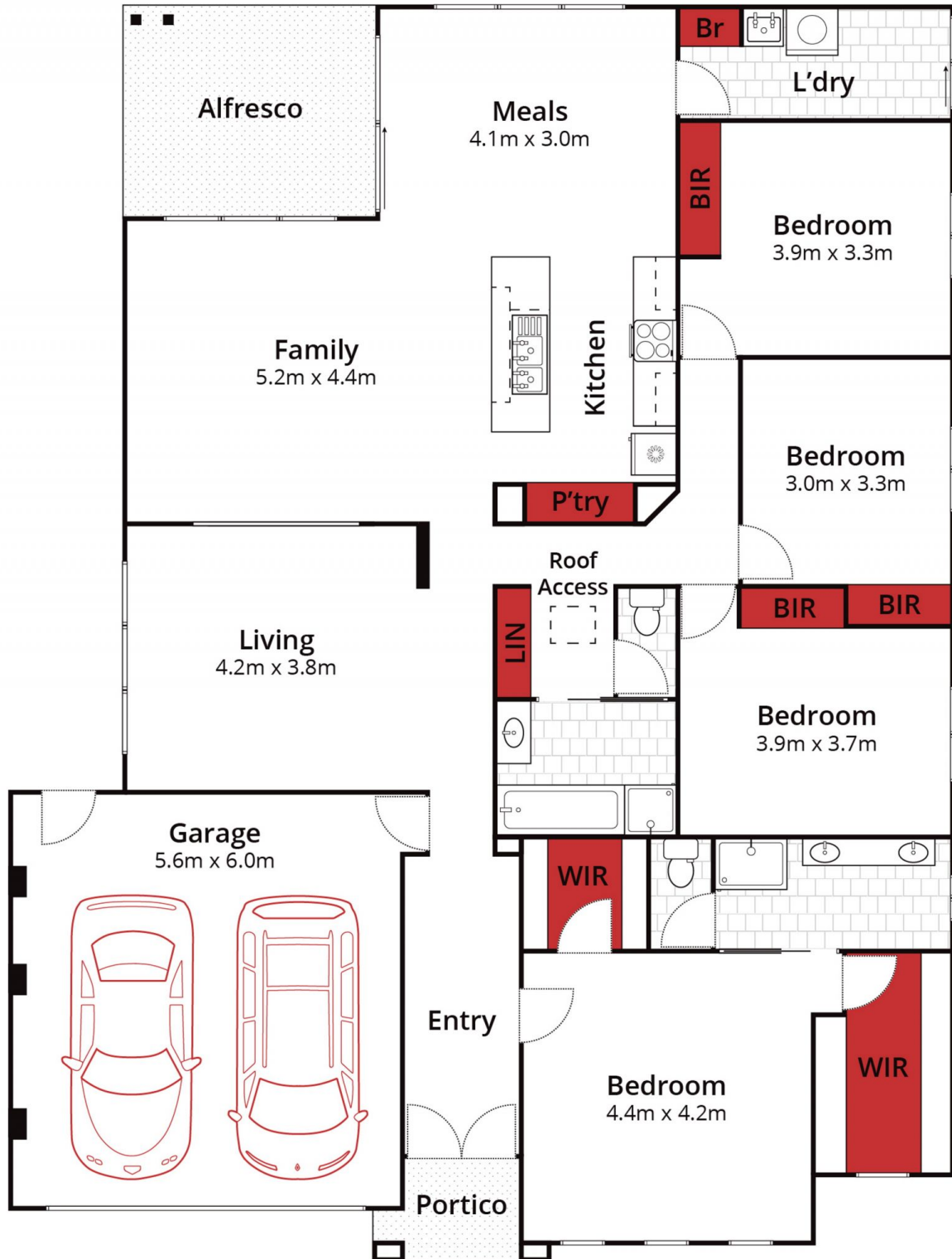
Price : \$670,000 - \$690,000

Land Size : 686 sqm

View : <https://www.ballaratrealestate.com.au/sale/vic/ballarat-western-district/alfredton/residential/house/7641889>



Alex Stepnell
03 53312233
0407373507



Approx House Area 207m²
 Approx Land Area 685m²



Whilst bwrn.com.au has made every attempt to ensure the accuracy of the floor plan contained here, measurements are approximate and no responsibility is taken for any error, omission, or mis-statement. This plan is for illustrative purposes only.

53 Lawrie Drive, Alfredton

Ballarat
 Real Estate

