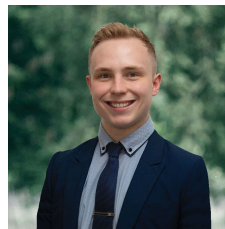




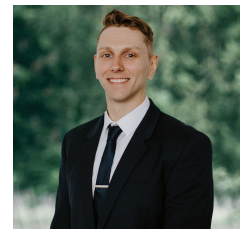
8 Cassowary Way Winter Valley VIC

Welcome to the sought after Carrington Estate, where an exciting opportunity awaits on this titled block spanning approximately 507m². Nestled within the sought-after Ballarat High School Zone, this prime location puts you just a stone's throw away from the upcoming Coles supermarket and bustling shopping hub, while the nearby Delacombe and Lucas shopping centers are just a short drive away. Experience the utmost convenience and an enviable lifestyle in this thriving community. For more information contact Lachlan Sylvia today!

Price : \$300,000 - \$320,000
Land Size : 507 sqm
View : <https://www.ballaratrealestate.com.au/sale/vic/ballarat-western-district/winter-valley/residential/land/7610449>



Lachlan Sylvia
03 53312233
0458 068 234



Chris Just
5331 2233
0438 235 293