



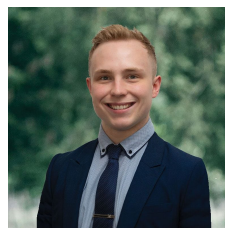
419 Elsworth Street Mount Pleasant VIC

Located in the desirable area of Mount Pleasant, this titled block of land spans an impressive 773m² (approx), offering ample space for your dream home (STCA) or to continue on with the current plans for subdivision and the construction of two dwellings which the owners have begun working on (STCA).

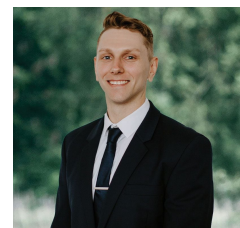
Conveniently positioned just a short drive away from Ballarat CBD, this property is surrounded by essential amenities such as supermarkets, gyms, public transport, shops and schools. With attractions like Sovereign Hill, the scenic Yarrowee River and picturesque walking trails in close proximity, this location is desirable.

For more information on what this property offers, contact Lachlan Sylvia today!

Price : \$290,000 - \$310,000
Land Size : 773 sqm
View : <https://www.ballaratrealestate.com.au/sale/vic/ballarat-western-district/mount-pleasant/residential/land/7605984>



Lachlan Sylvia
03 53312233
0458 068 234



Chris Just
5331 2233
0438 235 293