



## 19 Whitfields Lane Beaufort VIC

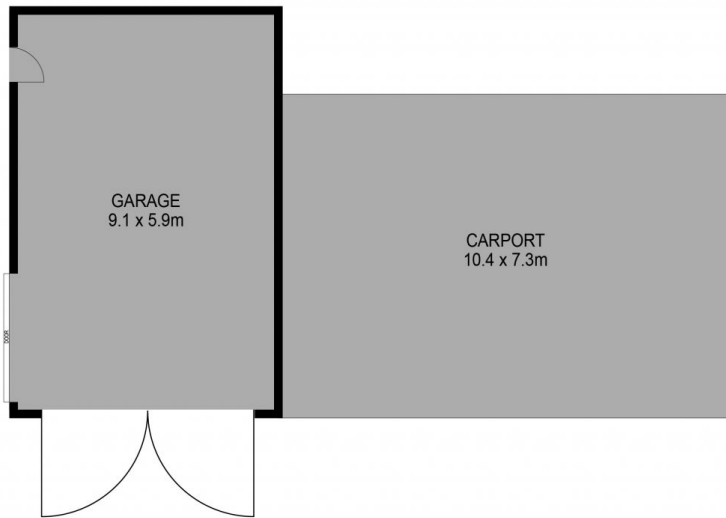
6 3 10

Rare residential 1 land located within the Correa Park Estate. It has two street frontages, Orchid Court and Whitfields Lane, which adds to its accessibility and potential development options. This land presents a rare opportunity for various groups and may appeal to those who require storage space for large equipment while desiring a peaceful living environment. Alternatively, individuals or organisations interested in development could take advantage of the flexible options offered by this property. The title includes two dwellings. The first is a 2-bedroom granny flat with a separate meter, set up for disability accommodation, providing an independent living space. The second dwelling is the main house, which features 4 bedrooms, a study, and multiple living spaces suitable for accommodating even larger families and boasts a large solar system. The carpet ...

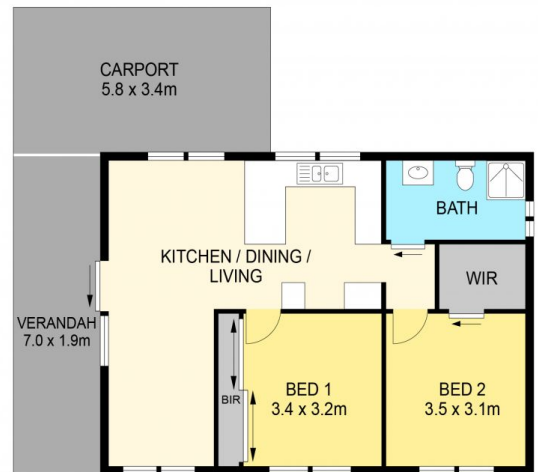
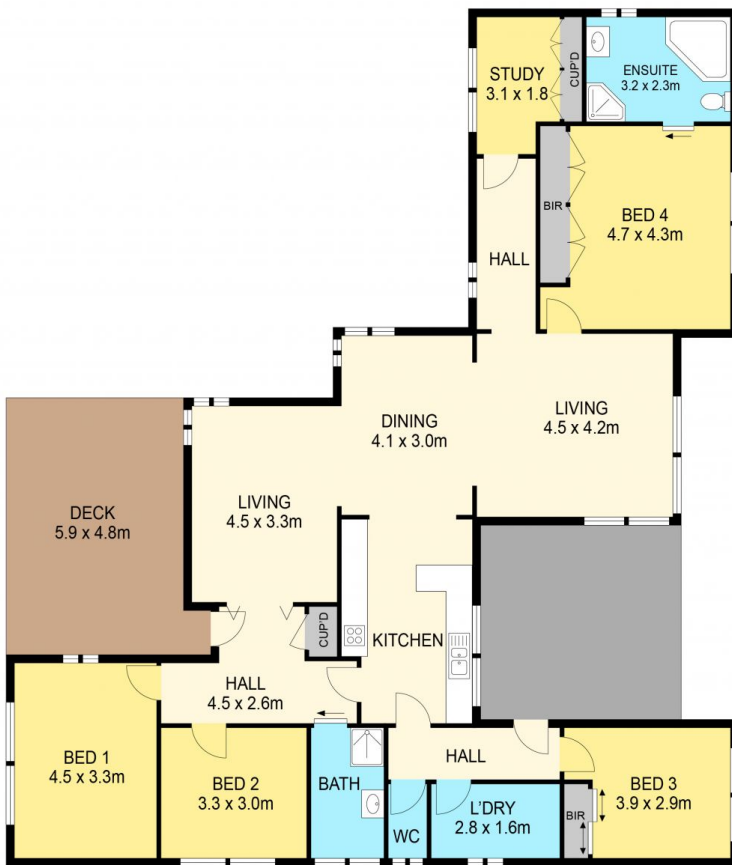
**Price** : \$ 700,000  
**Land Size** : 6650 sqm  
**View** : <https://www.ballaratrealestate.com.au/sale/vic/ballarat-western-district/beaufort/residential/acragesemirural/7585000>



**Blaise Newnham**  
 03 53312233  
 0423175643



(NOT IN POSITION)



BUNGALOW

#### DISCLAIMER

PLANS SHOWN ARE FOR MARKETING PURPOSES ONLY, ALL DIMENSIONS ARE APPROXIMATE AND NOT TO SCALE. THEY ARE SUBJECT TO ERRORS AND INACCURACIES AND NO LIABILITY WILL BE ACCEPTED. INTERESTED PARTIES SHOULD MAKE THEIR OWN INQUIRES.

Ballarat  
Real Estate

