



**448M2  
APPROX**

### 18 Cruz Road Winter Valley VIC

Nestled in the newly developing section of Winter Valley is this approximately 448m2 titled block of land.

Situated in close proximity to the Delacombe Town Centre, schools, parks, local sporting facilities and medical facilities makes this an ideal location to build your family home (STCA).

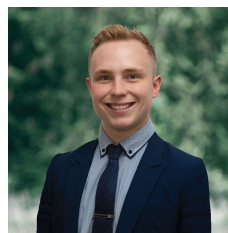
Contact Lachlan Sylvia for more information today.

TH2503

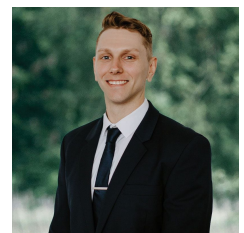
**Price** : \$250,000 - \$270,000

**Land Size** : 448 sqm

**View** : <https://www.ballaratrealestate.com.au/sale/vic/ballarat-western-district/winter-valley/residential/land/7552833>



**Lachlan Sylvia**  
03 53312233  
0458 068 234



**Chris Just**  
5331 2233  
0438 235 293