



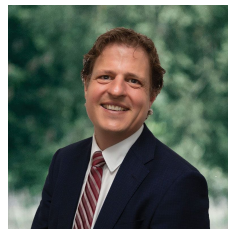
389 Glenelg Highway Smythes Creek VIC

4 3 2

Situated in the popular Pinnacle Estate located in Smythes Creek that is walking distance to Delacombe Town Centre and a short drive to Ballarat CBD. The home offers a wide entry with high ceilings and extensive floor tiling. The home boasts four good sized bedrooms with built in robes that are serviced by a centrally located bathroom with separate toilet. The master offers ensuite with double shower, twin vanity, separate toilet and walk in robe. The kitchen is well appointed and offers an island bench with stunning black stone benchtops that have plenty of cupboard space. The kitchen also offers a 900mm stainless steel gas cooktop, under bench electric oven, 24 place stainless steel dishwasher and large walk in pantry. The kitchen overlooks the open plan dining / living with a second large family room. The home is kept warm by gas ducted heating system and ...

Price : \$710,000 - \$750,000

View : <https://www.ballaratrealestate.com.au/sale/vic/ballarat-western-district/smythes-creek/residential/house/7544859>



Allister Morrison
5331 2233
0438 508Â 855

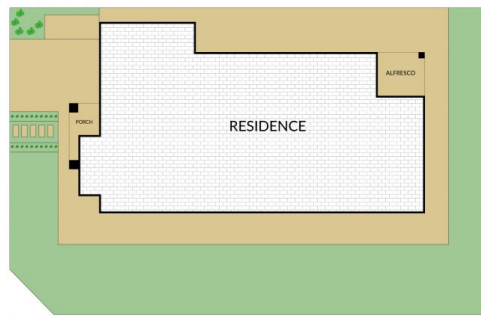
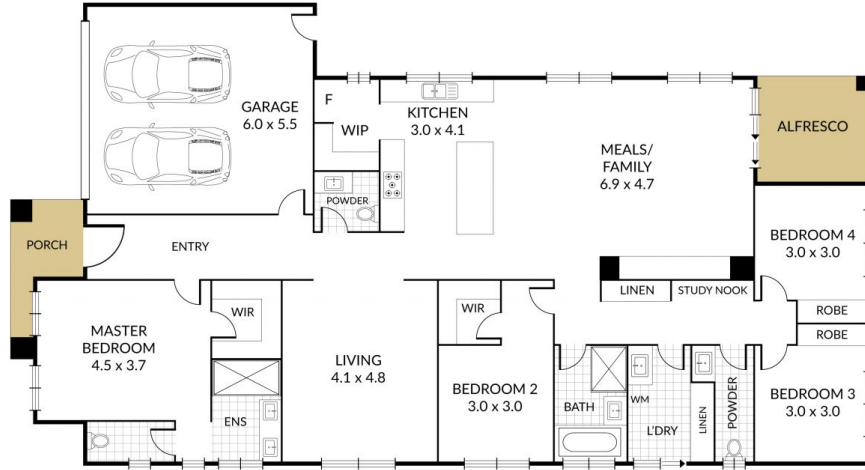
Internal 251m² External 385m² Total 636m²

389 Glenelg Highway, Smythes Creek



4 x 2 x 2 x

NORTH



NOTE: Every precaution has been taken to verify the accuracy of the above details. However, prospective purchasers are advised to make their own enquiries.