



**36 Continuance Way Delacombe VIC**

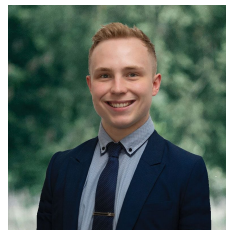
4 2 2

Situated in a quiet street is this beautiful family home nestled comfortably on an allotment of approx 642m2. Located in close proximity to schools, shops, all the Delacombe Town Centre (DTC) amenities and with Banyule Yaluk Reserve right at your door step makes this a wonderful place for a growing family to call home. Upon first view you are greeted with the brick veneer facade with rendered features with an immaculate lawn and low maintenance gardens, a great indication of what lies ahead. Inside you are welcomed by a warm modern home where quality and style is second to none. The generous front master suite boast a his and hers Walk In Robe leading through to the well thought after master ensuite that boasts a capacious shower, single vanity with ample bench space and toilet. The three remaining bedrooms, one of which is situated adjacent the master suite ...

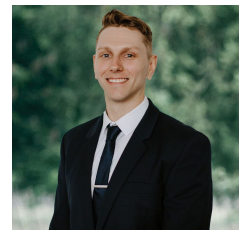
**Price** : \$ 660,000

**Land Size** : 642 sqm

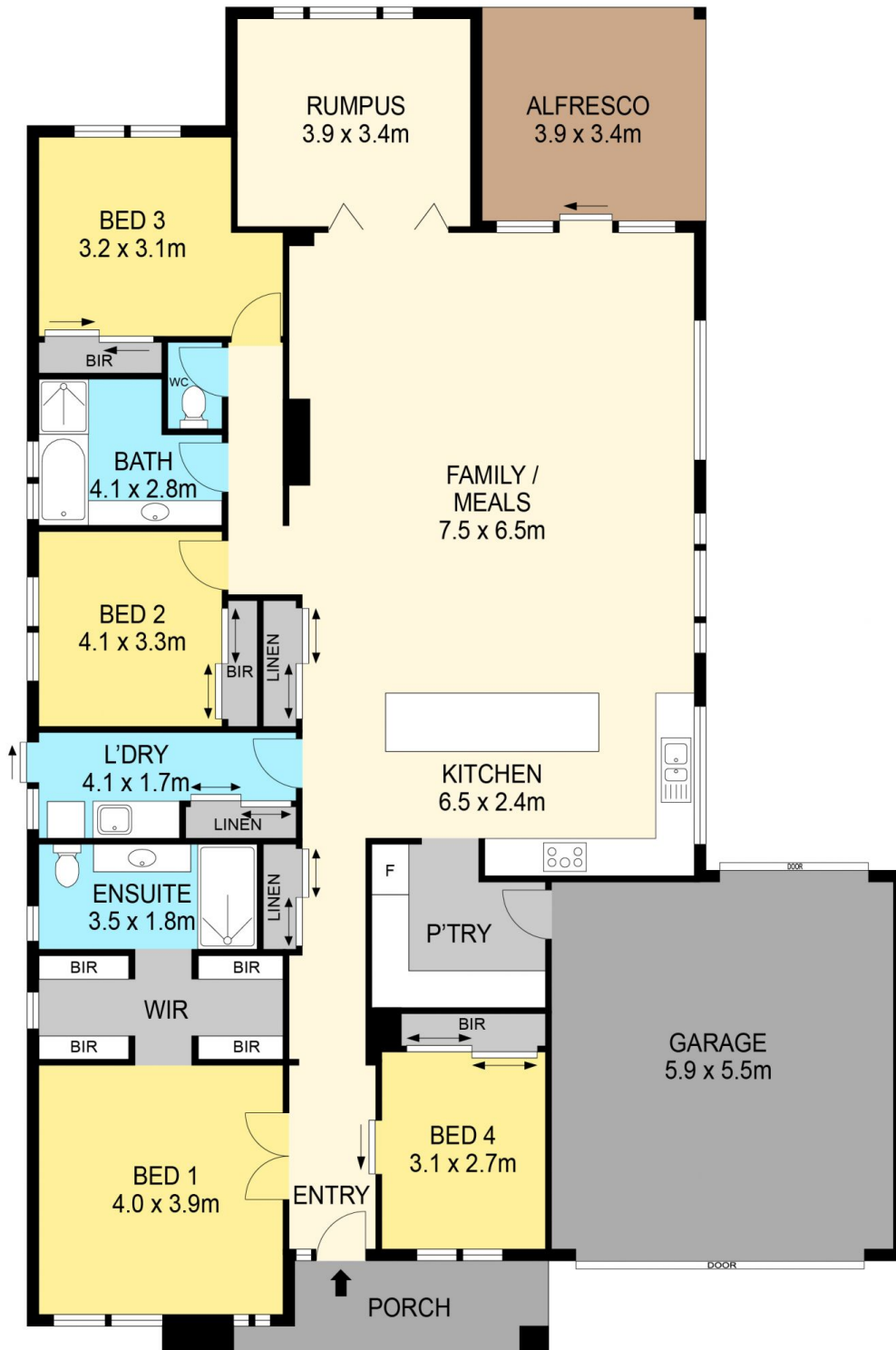
**View** : <https://www.ballaratrealestate.com.au/sale/vic/ballarat-western-district/delacombe/residential/house/7514683>



**Lachlan Sylvia**  
03 53312233  
0458 068 234



**Chris Just**  
5331 2233  
0438 235 293



**DISCLAIMER**

PLANS SHOWN ARE FOR MARKETING PURPOSES ONLY. ALL DIMENSIONS ARE APPROXIMATE AND NOT TO SCALE. THEY ARE SUBJECT TO ERRORS AND INACCURACIES AND NO LIABILITY WILL BE ACCEPTED. INTERESTED PARTIES SHOULD MAKE THEIR OWN INQUIRIES.

**Ballarat**  
Real Estate

