



### 8 Daphne Street Wendouree VIC

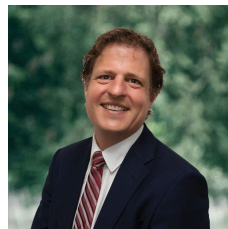
2 1 2

Ideally located close to Ballarat Grammar and Wendouree train station with multitude shopping options such as Aldi, Home Centre and Stockland Wendouree at your fingertips. The home sits on a large allotment of 652m<sup>2</sup> (approx). There are two big bedrooms, lounge room and kitchen with attached meals space. Outside there is a large backyard perfect for children and pets and space for extension or subdivision (STCA). This home provides a lot of scope to make your mark. Homes such as this do not last long. Be sure to contact Sarah Hanley on 0429 579 677 to ensure you do not miss out.

TH2004

**Price** : \$ 275,000

**View** : <https://www.ballaratrealestate.com.au/sale/vic/ballarat-western-district/wendouree/residential/house/7430388>

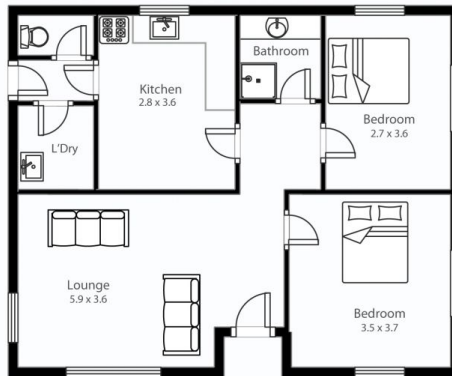


**Allister Morrison**  
5331 2233  
0438 508Â 855



**Brendan Elliott**  
03 5331 2233  
0459 976 132

## 8 Daphne St Wendouree



Contact: Allister Morrison 0438 508 855

This plan is for illustrative purposes only, floor plan proportions and scale are approximate. Plan prepared by PLP Ballarat © 2023 for Ballarat Real Estate.