

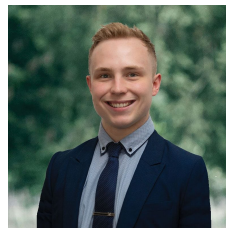


20 Darling Street Sebastopol VIC

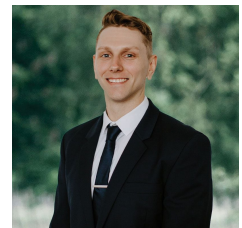
3 2 2

Located on a quiet street across from the Marty Busch Reserve is this three bedroom brick veneer home on a generous allotment of around 650m² (approx). This position is popular for it's proximity to shopping, parks, sporting facilities and schools. Inside you will find three well sized bedrooms, two of which have built in robes and the master equipped with an ensuite and walk in robe. The kitchen opens to the dining space while there is also a separate lounge room for the family to enjoy. The bathroom comes with separate bath and shower while there is also a full laundry. The house is serviced by gas central heating providing warmth in the colder months of the year. Outside you have a spacious rear yard for the kids to play and the dog to explore. There is a handy garden shed and for parking you have a double lock up garage. This property presents a great op ...

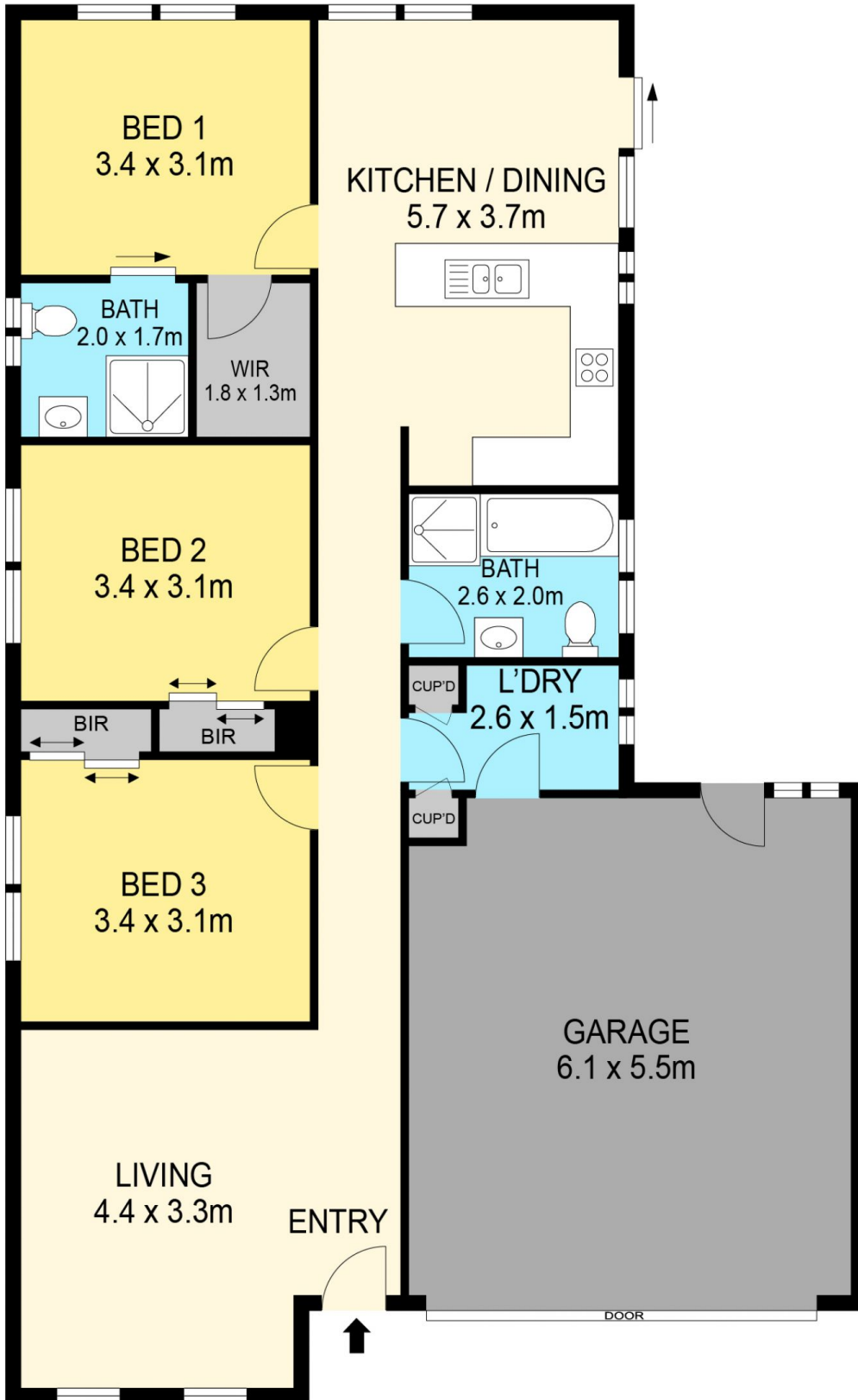
Price : \$ 393,000
Land Size : 650 sqm
View : <https://www.ballaratrealestate.com.au/sale/vic/ballarat-western-district/sebastopol/residential/house/7430339>



Lachlan Sylvia
03 53312233
0458 068 234



Chris Just
5331 2233
0438 235 293



DISCLAIMER

PLANS SHOWN ARE FOR MARKETING PURPOSES ONLY, ALL DIMENSIONS ARE APPROXIMATE AND NOT TO SCALE. THEY ARE SUBJECT TO ERRORS AND INACCURACIES AND NO LIABILITY WILL BE ACCEPTED. INTERESTED PARTIES SHOULD MAKE THEIR OWN INQUIRES.

Ballarat
Real Estate

