



### 21 Chifley Drive Delacombe VIC

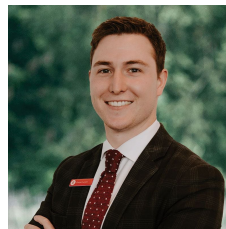
4 2 2

Located within striking distance of the very popular Delacombe Town Centre is the well maintained, low maintenance family home. Features of the property include four good size bedrooms, master with walk in robe and ensuite, large open plan kitchen and living space and a generous main bathroom. The home is kept comfortable all year round with gas ducted heating throughout and a split system air conditioner in the living space. Outside, the home features a double lock up garage with direct internal access, low maintenance gardens and an enclosed rear yard. Currently leased to an excellent tenant on a lease until June 2023. Be quick to inspect this one!

**Price** : \$550,000 - \$580,000

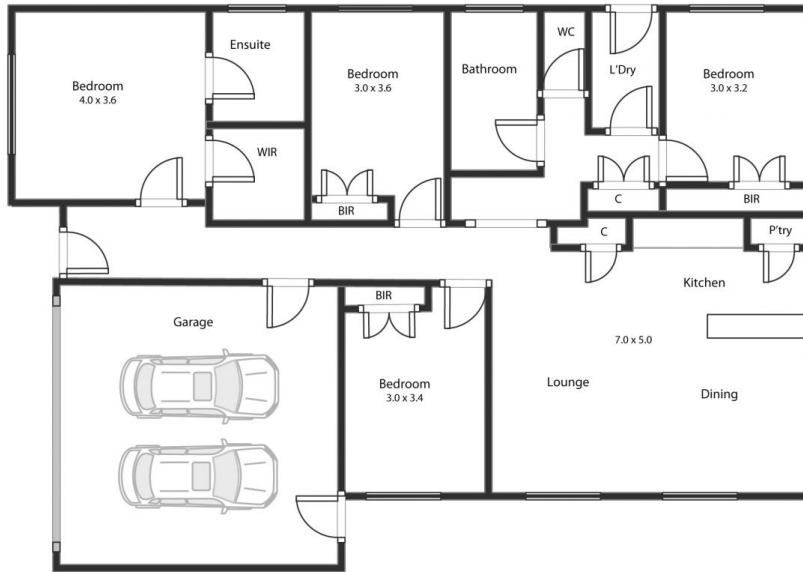
**View** : <https://www.ballaratrealestate.com.au/sale/vic/ballarat-western-district/delacombe/residential/house/7282339>

TH1212



**Oscar Currell**  
03 53312233  
0499 070 759

21 Chifley Drv Delacombe



This plan is for illustrative purposes only, floor plan proportions and scale are approximate. Plan prepared by PLP Ballarat © 2022 for Ballarat Real Estate.