



20 The Ridge Winter Valley VIC

3 2 4

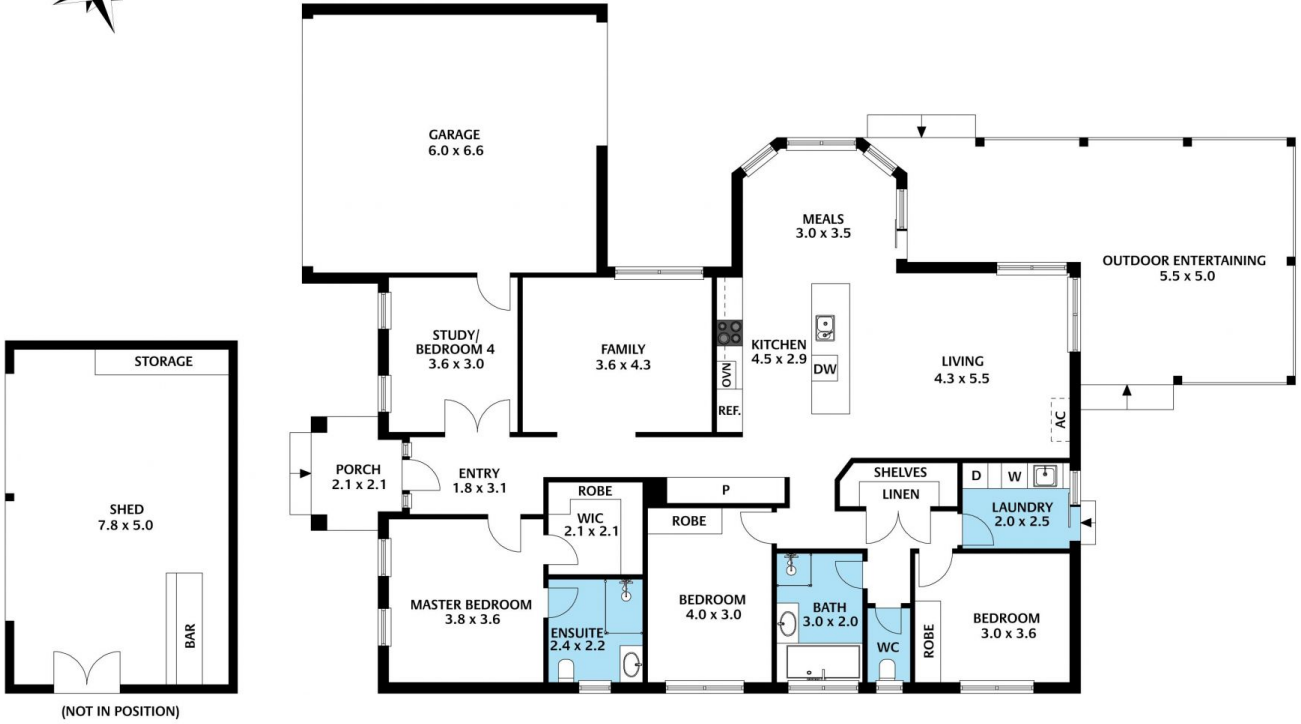
Positioned in one of Ballarat's most sought after areas is this three bedroom home on 701m² (approx). This location is heavily sought after due to its close proximity to schools, shops, public transport and Ballarat CBD. The three bedrooms are all of great size while there is a study which could easily be turned into a fourth bedroom. Two of the bedrooms feature built in robes while the master bedroom has a walk in robe and ensuite. The open plan kitchen, meals and living is spacious and light filled while there is a further separate family room upon entry. The bathroom offers separate shower and bath while there is a full laundry with direct access to the yard. The home also offers central heating throughout and has a split system for the warmer months. Outside you have a fully enclosed low maintenance yard with lots of space and a large double shed. The h ...

Price : \$ 700,000

View : <https://www.ballaratrealestate.com.au/sale/vic/ballarat-western-district/winter-valley/residential/house/7263607>



Adam Vranesic
03 53312233
0432 788 733



20 The Ridge, Delacombe 03 5329 2500

The floor plan is not to scale; measurements are indicative and in metres. Exterior elements are not in position.
Plans should not be relied on. Interested parties should make and rely on their own enquiries.