

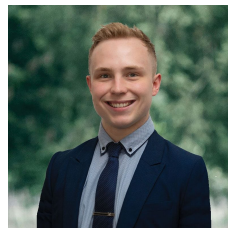


901 South Street Ballarat Central VIC

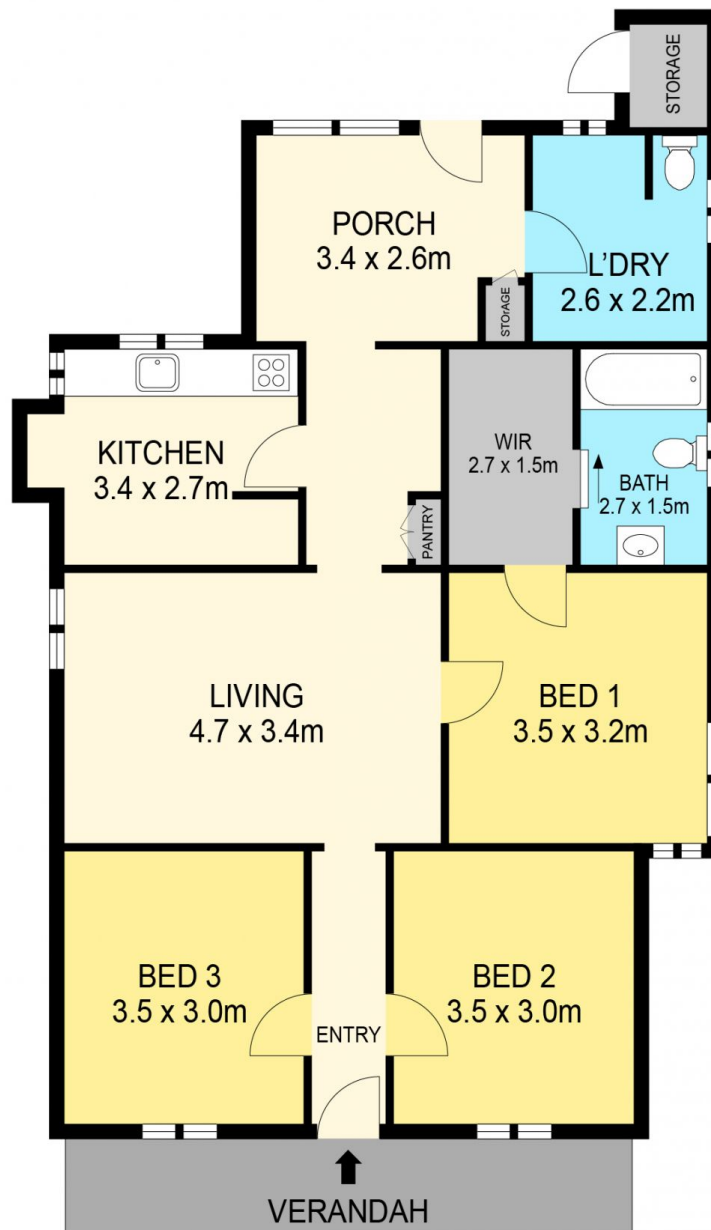
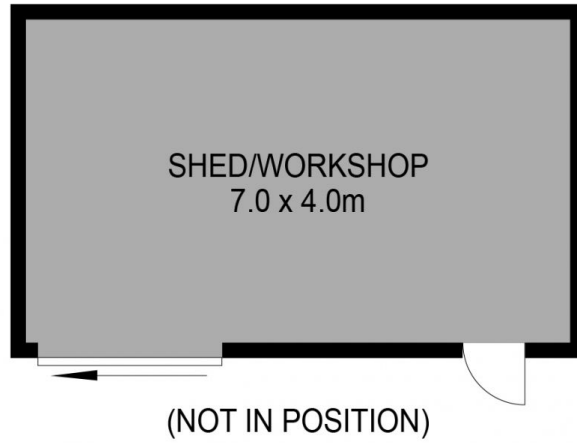
3 1 2

Centrally located within walking distance to the Ballarat CBD, Ballarat Train Station and Hospital precinct, this updated miner's cottage sits on a generously sized corner block and is ready for you to make your own. Internally, this property features three bedrooms, one of which has a walk-in robe and ensuite. In the centre of the home, you will find a cosy living space that can be heated by both a Nobo electric wall heater or woodfire. The kitchen has been updated with a rustic feel comprising of oven, stove, solid concrete basin and wooded bench top, with plenty of draw space. At the rear of the home, you will find a laundry with second toilet and further storage space. Externally this property features a gorgeous façade with well-kept gardens & front porch, off street parking, side access off Talbot Street South and two sheds, the biggest of which has w ...

Price : \$ 480,000
Land Size : 530 sqm
View : <https://www.ballaratrealestate.com.au/sale/vic/ballarat-western-district/ballarat-central/residential/house/7155073>



Lachlan Sylvia
03 53312233
0458 068 234



DISCLAIMER

PLANS SHOWN ARE FOR MARKETING PURPOSES ONLY. ALL DIMENSIONS ARE APPROXIMATE AND NOT TO SCALE. THEY ARE SUBJECT TO ERRORS AND INACCURACIES AND NO LIABILITY WILL BE ACCEPTED. INTERESTED PARTIES SHOULD MAKE THEIR OWN INQUIRES.

Ballarat
Real Estate

