



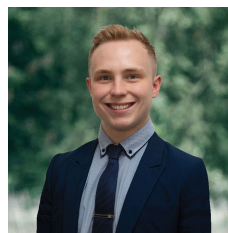
**512M2
APPROX**

31 Lakeland Drive Lucas VIC

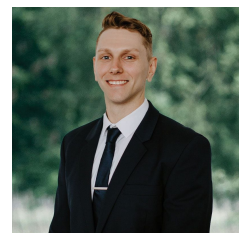
This block is approximately 512m2 and will give you the opportunity build your dream home (STCA). With titled land so scarce this brilliant opportunity is sure to be popular being just minutes from the Ballarat CBD, cafes, parks, schools, medical facilities and the Lucas shopping Centre. Contact Lachlan Sylvia for more information on this block today!

TH1608

Price : \$330,000
Land Size : 512 sqm
View : <https://www.ballaratrealestate.com.au/sale/vic/ballarat-western-district/lucas/residential/and/7123668>



Lachlan Sylvia
03 53312233
0458 068 234



Chris Just
5331 2233
0438 235 293