



### 50 Continuance Way Delacombe VIC

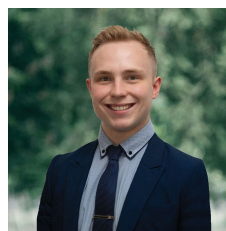
4 2 5

Located just minutes from the Ballarat CBD, Delacombe Town Centre and schools sits this highly energy efficient Bryan & Petersen custom built home.

Both the design and specification of this home focus on all year-round comfort with low energy bills. Features such as north facing living areas, commercial grade double glazed windows & doors, high levels of insulation, cantilevered eaves and a huge 10kw 3-phase solar system contribute to a home that is naturally warmer in winter and cooler in summer.

Choose between heating the home with either electricity or gas, with options including a 5-star zoned gas central heating system and three (3) well located reverse cycle split system air-conditioners. \*\* Currently this home

**Price** : \$ 800,000  
**Land Size** : 711 sqm  
**View** : <https://www.ballaratrealestate.com.au/sale/vic/ballarat-western-district/delacombe/residential/house/6996125>



**Lachlan Sylvia**  
03 53312233  
0458 068 234



**Alex Stepnell**  
03 53312233  
0407373507

## 50 Continuance Way Delacombe



This plan is for illustrative purposes only, floor plan proportions and scale are approximate. Plan prepared by PLP Ballarat © 2022 for Ballarat Real Estate.



Contact: Lachlan Sylvia 0458 068 234