



### 7 Pettett Close Miners Rest VIC

4 2 2

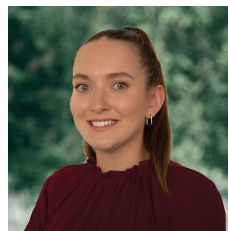
Situated in the ever popular Miners Rest and located within minutes from the Melbourne Freeway is this flawless family home. The home comprises of 4 generous sized bedrooms including a master with ensuite and WIR, 2 separate living areas, and a spacious walk-in linen cupboard.

In the heart of the home, you will find an open plan living and dining area that flows seamlessly into the kitchen. The kitchen includes a 900 mm oven and stove top, stone bench tops, dishwasher, generous sized pantry with ample storage and a double fridge space, and central heating and evaporative cooling offering year-round comfort.

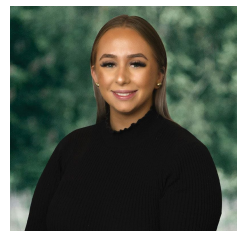
Outdoors features a double car garage and ample space for entertaining friends and family.

This quality home is a must see. Be sure to inspect!

**View :** <https://www.ballaratrealestate.com.au/lease/vic/ballarat-western-district/miners-rest/residential/house/6991724>



**Stacey McCorkindale**  
03 5331 2233



**Grace Smith**  
03 53312233