

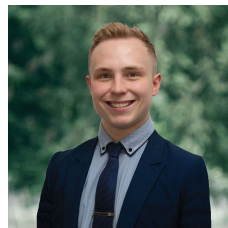


6 Brahman Drive Delacombe VIC

4 2 4

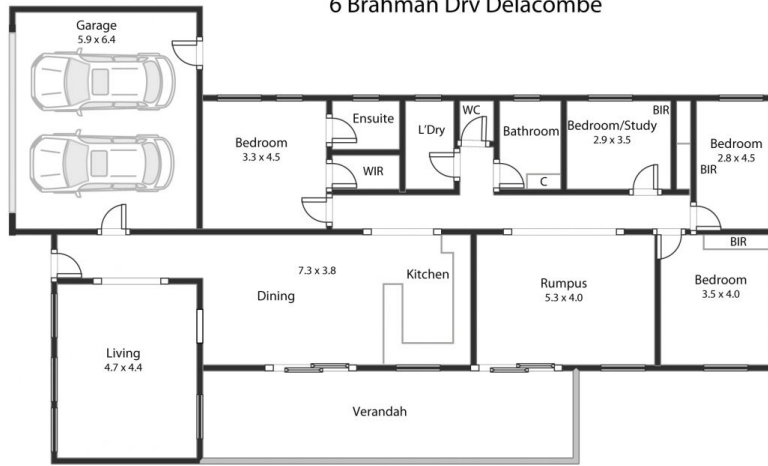
Located just minutes from the Ballarat CBD, Delacombe Town Centre and schools sits this quality-built home. Internally, this property features four bedrooms, the master with an ensuite and walk in robe while the remaining three bedrooms have built in robes. At the front of the home, you will find a large living space that is part of an open plan kitchen and dining area. The kitchen has ample cupboard and bench space as well as a large pantry. The main bathroom is cleverly positioned and features bath, shower and vanity while the laundry has ample storage. Nearing the back of the home you will find a rumpus room that looks out onto the alfresco area and low maintenance yard. Externally, this property offers everything with side access, large shedding, carport big enough for a caravan, double lock up garage, wood shed, garden shed, water tanks and alfresco. Ot ...

Price : \$ 730,000
Land Size : 673 sqm
View : <https://www.ballaratrealestate.com.au/sale/vic/ballarat-western-district/delacombe/residential/house/6986665>



Lachlan Sylvia
03 53312233
0458 068 234

6 Brahman Drv Delacombe



This plan is for illustrative purposes only, floor plan proportions and scale are approximate. Plan prepared by PLP Ballarat © 2022 for Ballarat Real Estate.



Contact: Lachlan Sylvia 0458068234