



21 Chifley Drive Delacombe VIC

4 2 2

Located within striking distance of the very popular Delacombe Town Centre is the well maintained, low maintenance home. Features of the property include four bedrooms, master with walk in robe and ensuite, large open plan kitchen and living space and a generous main bathroom. The home is kept comfortable all year round with gas ducted heating throughout and a split system air conditioner in the living space. Outside, the home features a double lock up garage with direct internal access, low maintenance gardens and an enclosed rear yard. Currently leased to an excellent tenant on a lease until 20th May 2022. Be quick to inspect this one!

Price : \$ 510,000
Land Size : 397 sqm
View : <https://www.ballaratrealestate.com.au/sale/vic/ballarat-western-district/delacombe/residential/house/6921196>

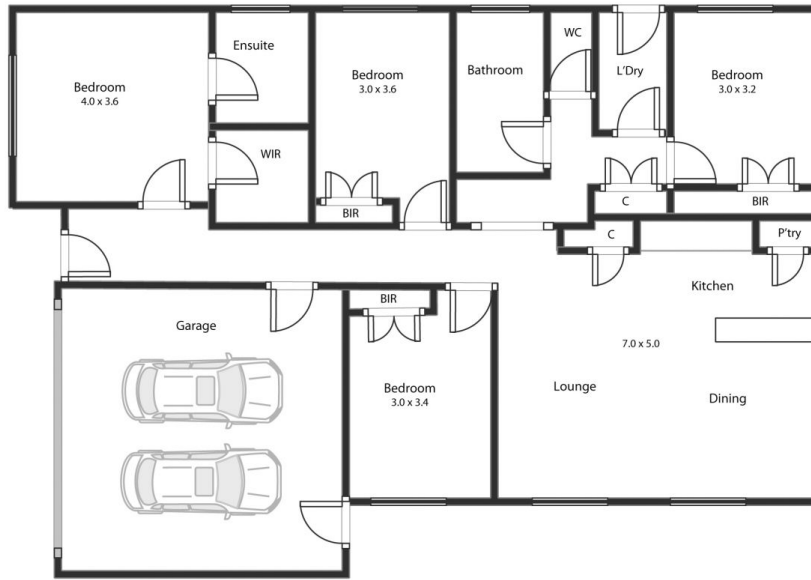


David Morrison
03 53312233
0438 342 227



Oscar Currell
03 53312233
0499 070 759

21 Chifley Drv Delacombe



This plan is for illustrative purposes only, floor plan proportions and scale are approximate. Plan prepared by PLP Ballarat © 2022 for Ballarat Real Estate.



David Morrison 0438 342 227
Oscar Currell 0499 070 759