

1/15 Llewellyn Court California Gully VIC

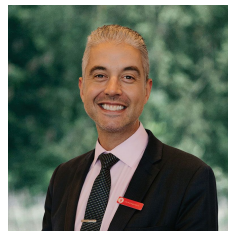
2 1 1

****Massive Stamp Duty and First Home buyer/builders grants available****

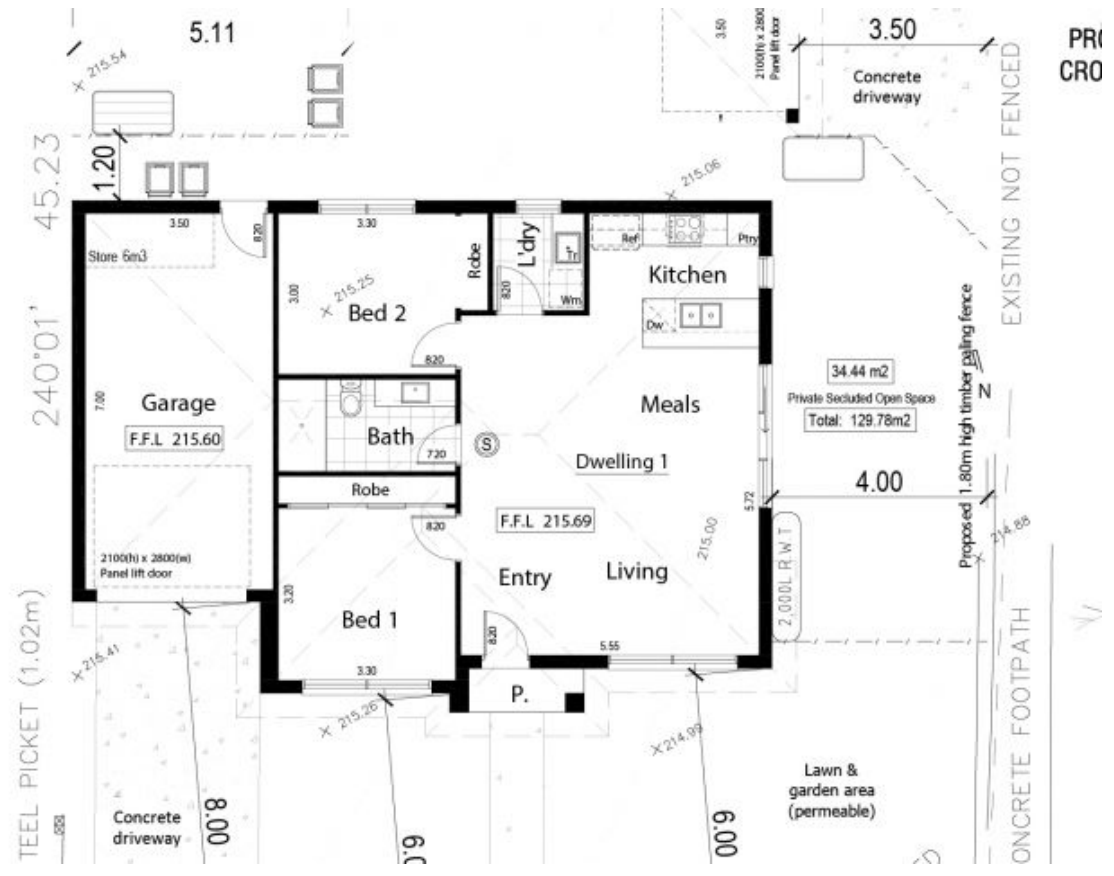
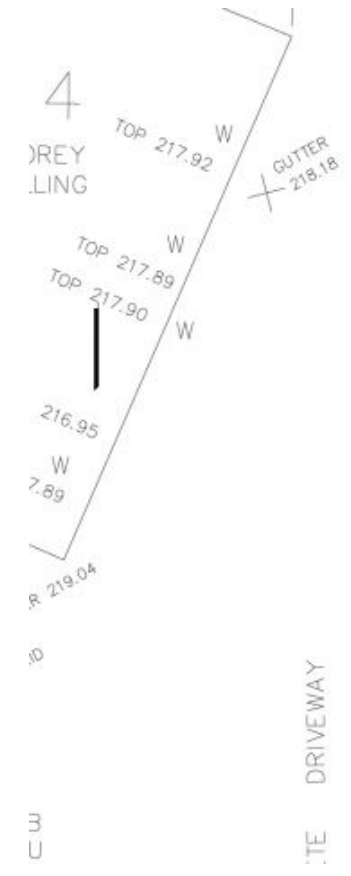
An opportunity to purchase this brand new turn-key two bedroom open plan home doesn't come up often. Built by boutique local builder the smart floor plan featuring good sized master bedroom with built in robes while the remaining bedroom also includes built in robes. Featuring spacious open plan kitchen, meals and living area with stone bench tops, stainless steel appliances, dishwasher, split system air conditioning and ducted heating ensuring year round comfort. The central modern bathroom includes large shower, stone top vanity and toilet. The separate laundry offers a sink and room for washer and dryer. The single garage includes remote roller door and direct access to inside. Further enhancements to the home include spacious landscaped front and backyard with plenty of

Price : \$ 350,000

View : <https://www.ballaratrealestate.com.au/sale/vic/gr-eater-bendigo-region/california-gully/residential/unit/6795130>



Jay Kalogerakis
03 53312233
0430200663



PR
CRO